

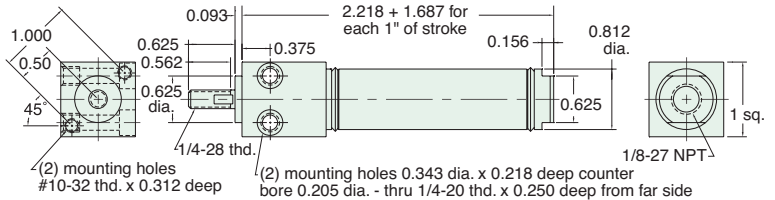
3/4" BORE STAINLESS STEEL CYLINDER



FSR-12-□-□

Single Acting

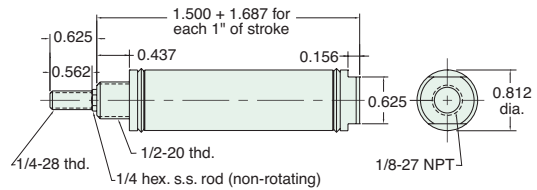
Mount: Front **Standard Stroke Lengths:** 1/2", 1", 1-1/2", 2", 3", 4"
Type: Rotating Rod **Spring Compressed:** 6 lbs. **Spring At Rest:** 3 lbs.
Options: M, B, H, V, S, N, W **Maximum Stroke:** 25" For B option add 0.500
 For M option add 0.125
 For S option add 0.437



SSN-12-□-□

Single Acting

Mount: Stud **Standard Stroke Lengths:** 1/2", 1", 1-1/2", 2", 3", 4"
Type: Non-Rotating Rod **Spring Compressed:** 6 lbs. **Spring At Rest:** 3 lbs.
Options: M, B, H, V, S, N **Maximum Stroke:** 26" For B option add 0.500
 For M option add 0.125
 For S option add 0.437

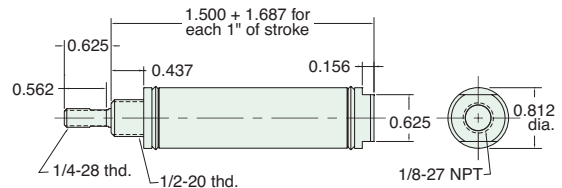


Nut included, but not shown on drawing

SSR-12-□-□

Single Acting

Mount: Stud **Standard Stroke Lengths:** 1/2", 1", 1-1/2", 2", 3", 4"
Type: Rotating Rod **Spring Compressed:** 6 lbs. **Spring At Rest:** 3 lbs.
Options: M, B, H, V, S, N, W **Maximum Stroke:** 26" For B option add 0.500
 For M option add 0.125
 For S option add 0.437

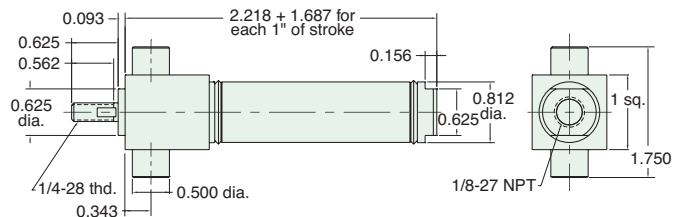


Nut included, but not shown on drawing

TSR-12-□-□

Single Acting

Mount: Trunnion **Standard Stroke Lengths:** 1/2", 1", 1-1/2", 2", 3", 4"
Type: Rotating Rod **Spring Compressed:** 6 lbs. **Spring At Rest:** 3 lbs.
Options: M, B, H, V, S, N **Maximum Stroke:** 25" For B option add 0.500
 For M option add 0.125
 For S option add 0.437





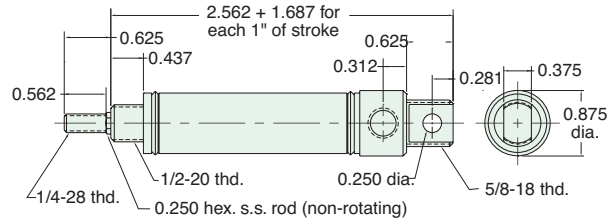
3/4" BORE STAINLESS STEEL CYLINDER

USN-12-□-□

Single Acting

Mount: Universal **Standard Stroke Lengths:** 1/2", 1", 1-1/2", 2", 3", 4"
Type: Non-Rotating Rod **Spring Compressed:** 6 lbs. **Spring At Rest:** 3 lbs.
Options: M, B, H, V, P6, N **Maximum Stroke:** 25"

For B option add 0.500
 For M option add 0.125



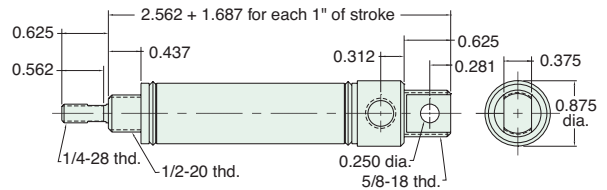
Furnished without nut(s). See Chart on Page 24.

USR-12-□-□

Single Acting

Mount: Universal **Standard Stroke Lengths:** 1/2", 1", 1-1/2", 2", 3", 4"
Type: Rotating Rod **Spring Compressed:** 6 lbs. **Spring At Rest:** 3 lbs.
Options: M, B, H, V, P6, N, W **Maximum Stroke:** 25"

For B option add 0.500
 For M option add 0.125



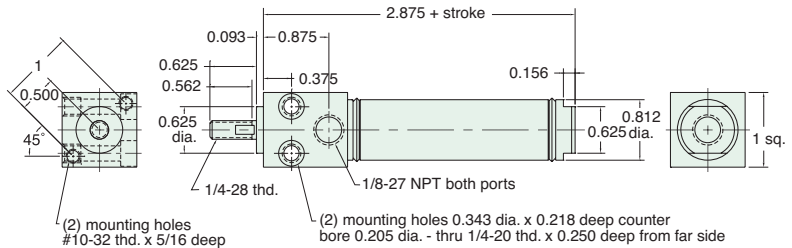
Furnished without nut(s). See Chart on Page 24.

FDR-12-□-□

Double Acting

Mount: Front **Standard Stroke Lengths:** 1/2", 1", 1-1/2", 2", 3", 4", 5", 6"
Type: Rotating Rod **Maximum Stroke:** 42"
Options: M, B, W, V, P6, P7, P8, S, N

For B option add 0.500
 For S option add 0.437



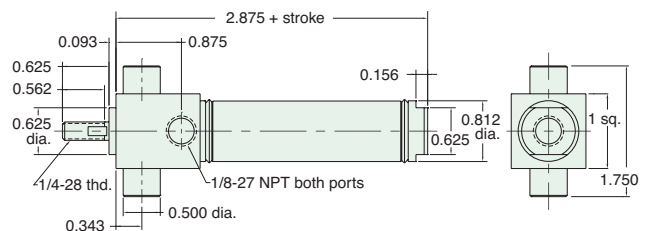
Furnished without nut(s). See Chart on Page 24.

TDR-12-□-□

Double Acting

Mount: Trunnion **Standard Stroke Lengths:** 1/2", 1", 1-1/2", 2", 3", 4", 5", 6"
Type: Rotating Rod **Maximum Stroke:** 42"
Options: M, B, W, V, S, N, P6, P7, P8

For B option add 0.500
 For S option add 0.437



3/4" BORE STAINLESS STEEL CYLINDER

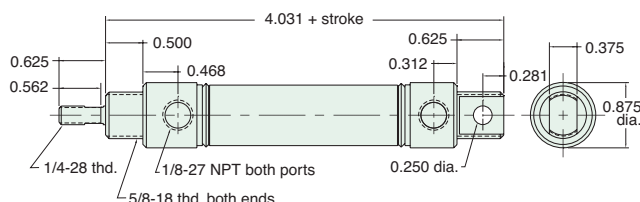


UDR-12-□-□

Double Acting



Mount: Stud **Standard Stroke Lengths:** 1/2", 1", 1-1/2", 2", 3", 4", 5", 6", 8", 10", 12"
Type: Rotating rod **Maximum Stroke:** 41"
Options: C, F, R, B, W, V, P2, P3, P4, P5, P6, P7, P8, M, N For B option add 0.500



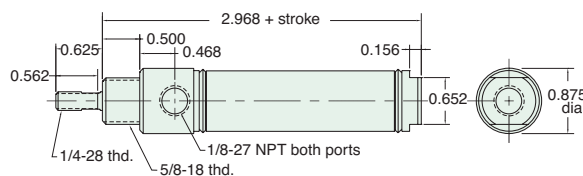
Furnished without nut(s). See Chart on Page 24.

SDR-12-□-□

Double Acting



Mount: Stud **Standard Stroke Lengths:** 1/2", 1", 1-1/2", 2", 3", 4", 5", 6"
Type: Rotating Rod **Maximum Stroke:** 42"
Options: C, F, R, B, W, V, P6, P7, P8, S, M, N For B option add 0.500
For C, F, R & S options add 0.437



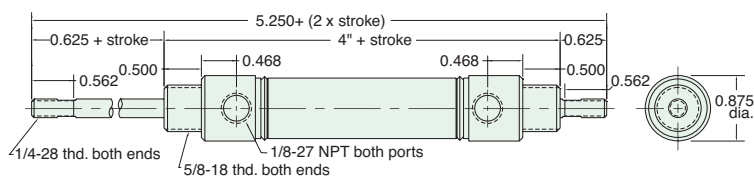
Nuts included, but not shown on drawing
 For C, F, & R options use side ported rear head

SDD-12-□-□

Double Acting



Mount: Stud **Standard Stroke Lengths:** 1", 2", 3", 4", 5", 6"
Type: Double Rod **Maximum Stroke:** 20"
Options: C, F, B, W, V, P6, P7, P8, M, N For B option add 0.500



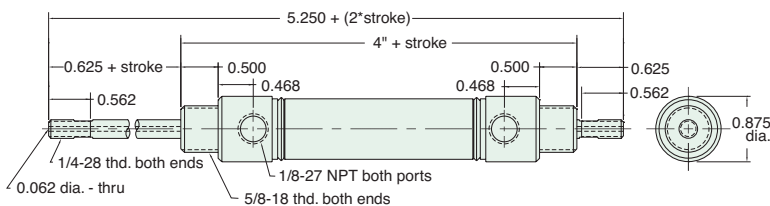
Nuts included, but not shown on drawing

SDH-12-□-□

Double Acting



Mount: Stud **Standard Stroke Lengths:** 1", 2", 3", 4", 5", 6"
Type: Hollow Rod **Maximum Stroke:** 20"
Options: B, W, V, P6, P7, P8, M, N For B option add 0.500



Nuts included, but not shown on drawing

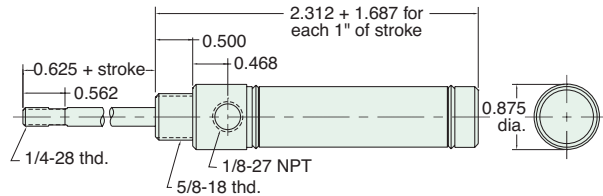


3/4" BORE STAINLESS STEEL CYLINDER

SRR-12-□-□

Reverse Acting

Mount: Stud **Standard Stroke Lengths:** 1/2", 1", 1-1/2", 2", 3", 4"
Type: Rotating Rod **Spring Compressed:** 6 lbs. **Spring At Rest:** 3 lbs.
Options: M, B, H, W, V, N **Maximum Stroke:** 16" For B option add 0.375
For M option add 0.125

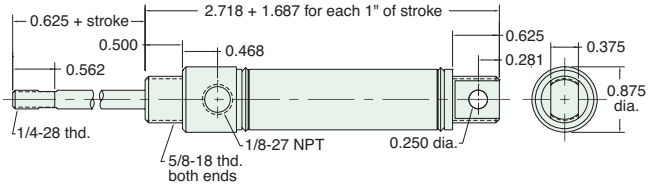


Nut included, but not shown on drawing

URR-12-□-□

Reverse Acting

Mount: Universal **Standard Stroke Lengths:** 1/2", 1", 1-1/2", 2", 3", 4"
Type: Rotating Rod **Spring Compressed:** 6 lbs. **Spring At Rest:** 3 lbs.
Options: M, B, H, W, V, P2, N, W **Maximum Stroke:** 15" For B option add 0.500
For M option add 0.125

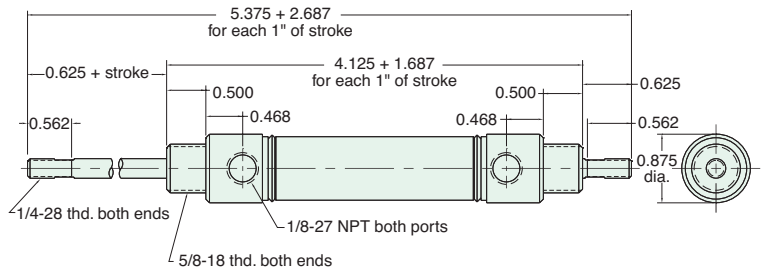


Furnished without nut(s). See Chart on Page 24.

SFD-12-□-□

Double Acting, Spring Bias

Mount: Stud **Standard Stroke Lengths:** 1/2", 1", 1-1/2", 2", 3", 4"
Type: Double Rod **Spring Compressed:** 6 lbs. **Spring At Rest:** 3 lbs.
Options: M, B, H, W, V, P6, P7, P8, N **Maximum Stroke:** 15" For B option add 0.375

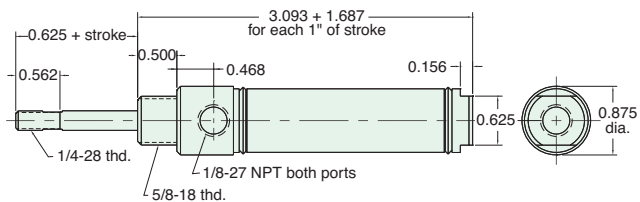


Nuts included, but not shown on drawing

SBR-12-□-□

Double Acting, Rear Spring Bias

Mount: Stud **Standard Stroke Lengths:** 1/2", 1", 1-1/2", 2", 3", 4"
Type: Rotating Rod **Spring Compressed:** 6 lbs. **Spring At Rest:** 3 lbs.
Options: M, B, H, W, V, P6, P7, P8, S, N **Maximum Stroke:** 15" For B option add 0.375
For S option add 0.437



Nut included, but not shown on drawing

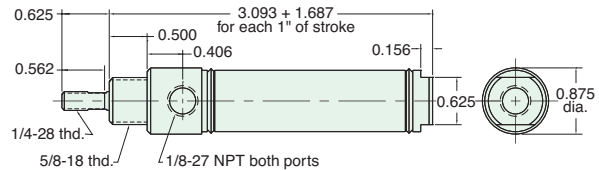
3/4" BORE STAINLESS STEEL CYLINDER



SFR-12-□-□

Double Acting, Front Spring Bias

Mount: Stud **Standard Stroke Lengths:** 1/2", 1", 1-1/2", 2", 3", 4"
Type: Rotating Rod **Spring Compressed:** 6 lbs. **Spring At Rest:** 3 lbs.
Options: M, B, H, W, V, P6, P7, P8, S, N **Maximum Stroke:** 25" For B option add 0.375
For S option add 0.437

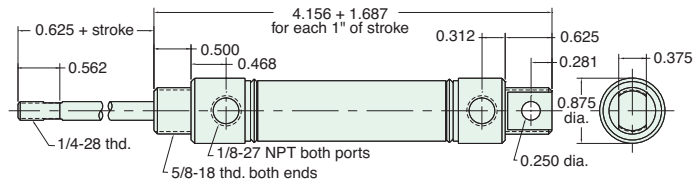


Nut included, but not shown on drawing

UBR-12-□-□

Double Acting, Rear Spring Bias

Mount: Universal **Standard Stroke Lengths:** 1/2", 1", 1-1/2", 2", 3", 4"
Type: Rotating Rod **Spring Compressed:** 6 lbs. **Spring At Rest:** 3 lbs.
Options: M, B, H, W, V, P2, P3, P4, P5, P6, P7, P8, N **Maximum Stroke:** 15" For B option add 0.375

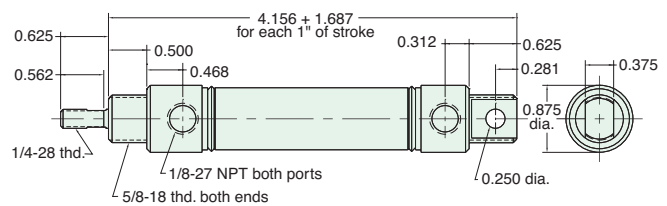


Furnished without nut(s). See Chart on Page 24.

UFR-12-□-□

Double Acting, Front Spring Bias

Mount: Universal **Standard Stroke Lengths:** 1/2", 1", 1-1/2", 2", 3", 4"
Type: Rotating Rod **Spring Compressed:** 6 lbs. **Spring At Rest:** 3 lbs.
Options: M, B, H, W, V, P2, P3, P4, P5, P6, P7, P8, N **Maximum Stroke:** 24" For B option add 0.375



Furnished without nut(s). See Chart on Page 24.



CAD 2D & 3D Models Available

2D & 3D CAD models of all Clippard stainless steel cylinders are available via www.clippard.com/cylinders/. A wide range of formats are offered for your convenience. Clippard's on-line, state-of-the-art cylinder configurator allows users to build their own cylinder exactly to the required specifications, and then view the details, drawings, CAD models, pricing and much more!

www.clippard.com/cylinders/

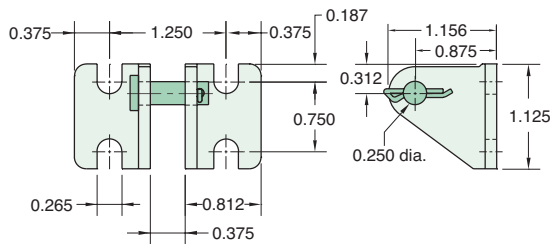


3/4" BORE ACCESSORIES



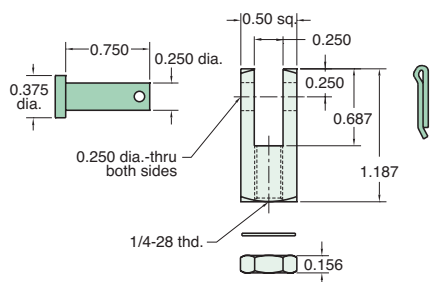
CB-1795

Clevis Bracket
Material: Steel, bright zinc plated



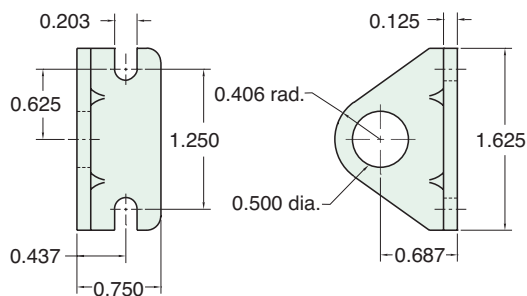
RC-1281

Rod Clevis
Material: Steel, electroless nickel plate



FB-1291

Foot Bracket
Material: Steel, bright zinc plated



MOUNTING NUTS

Stud Nut

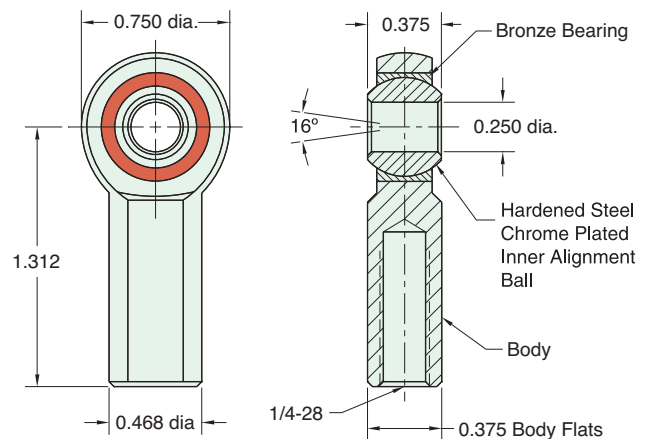
Part Number	Across Flats	Nut Thickness	Nut (Thread)
N08-20	3/4"	5/16"	1/2-20
N10-18	15/16"	3/8"	5/8-18

Rod Nut

Part Number	Across Flats	Nut Thickness	Nut (Thread)
N04-28A	7/16"	5/32"	1/4-28
N04-28B	3/8"	1/8"	1/4-28

RE-1285

Rod End
Material: Steel, bright zinc plated body



Lockwasher

Locknut

Max. Static Radial Load: 2545 lbs.
Fits Rod Thread Size: 1/4-28

FB-1791

Foot Bracket
Material: Steel, bright zinc plated

