

1 1/4" BORE STAINLESS STEEL CYLINDER



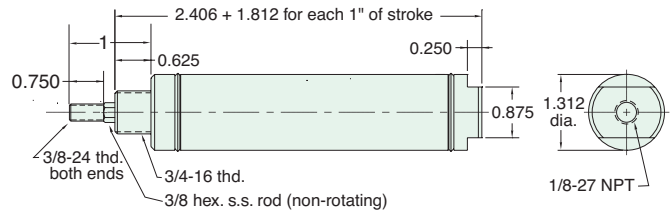
Note: The 1 1/4" bore is also available with a 7/16-20 threaded rod. Order -LR option.

SSN-20-□-□

Single Acting



Mount: Stud **Standard Stroke Lengths:** 1/2", 1", 1-1/2", 2", 3", 4"
Type: Non-Rotating Rod **Spring Compressed:** 10 lbs. **Spring At Rest:** 4.5 lbs.
Options: M, B, H, V, S, N **Maximum Stroke:** 23" For M option add 0.125
 For S option add 0.312



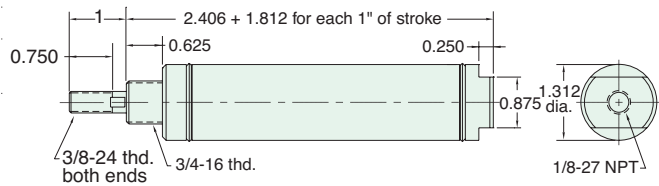
Nut included, but not shown on drawing

SSR-20-□-□

Single Acting



Mount: Stud **Standard Stroke Lengths:** 1/2", 1", 1-1/2", 2", 3", 4"
Type: Rotating Rod **Spring Compressed:** 10 lbs. **Spring At Rest:** 4.5 lbs.
Options: M, B, H, V, S, N **Maximum Stroke:** 23" For M option add 0.125
 For S option add 0.312



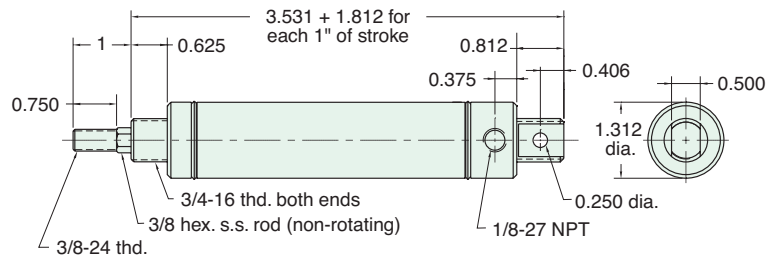
Nut included, but not shown on drawing

USN-20-□-□

Single Acting



Mount: Universal **Standard Stroke Lengths:** 1/2", 1", 1-1/2", 2", 3", 4"
Type: Non-Rotating Rod **Spring Compressed:** 10 lbs. **Spring At Rest:** 4.5 lbs.
Options: M, B, H, V, P6, N **Maximum Stroke:** 22" For M option add 0.125



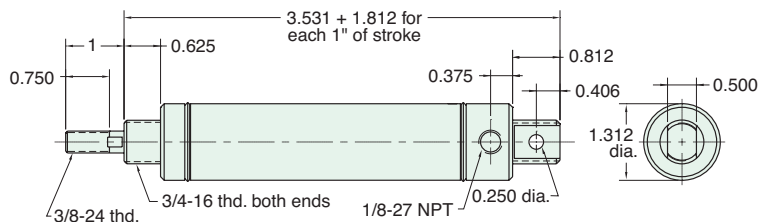
Furnished without nut(s). See Chart on Page 38.

USR-20-□-□

Single Acting



Mount: Universal **Standard Stroke Lengths:** 1/2", 1", 1-1/2", 2", 3", 4"
Type: Rotating Rod **Spring Compressed:** 10 lbs. **Spring At Rest:** 4.5 lbs.
Options: M, B, H, V, P6, N **Maximum Stroke:** 22" For M option add 0.125



Furnished without nut(s). See Chart on Page 38.



1 1/4" BORE STAINLESS STEEL CYLINDER

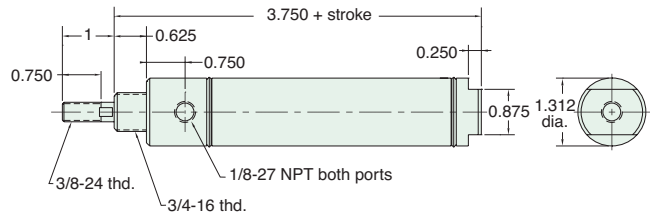
Note: The 1 1/4" bore is also available with a 7/16-20 threaded rod. Order -LR option.

SDR-20-□-□

Double Acting



Mount: Stud **Standard Stroke Lengths:** 1/2", 1", 1-1/2", 2", 3", 4", 5", 6"
Type: Rotating Rod **Maximum Stroke:** 41"
Options: C, F, R, M, B, W, V, P6, P7, P8, S, N For C, F, R and S option add 0.312
 For CM, FM, RM and SM options add 0.625



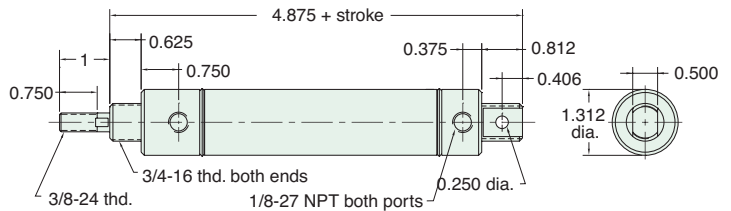
Nut included, but not shown on drawing
 For C, F, & R options use side ported rear head

UDR-20-□-□

Double Acting



Mount: Universal **Standard Stroke Lengths:** 1/2", 1", 1-1/2", 2", 3", 4", 6", 8", 10", 12"
Type: Rotating Rod **Maximum Stroke:** 40"
Options: C, F, R, M, B, W, V, P2, P3, P4, P5, P6, P7, P8, N For CM, FM, RM and SM options add 0.312



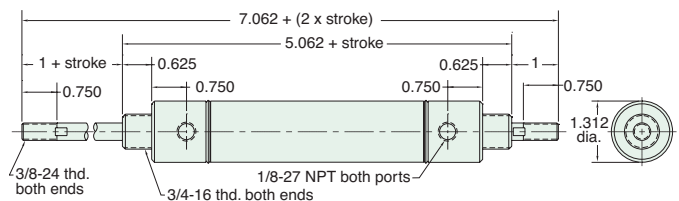
Furnished without nut(s). See Chart on Page 38.

SDD-20-□-□

Double Acting



Mount: Stud **Standard Stroke Lengths:** 1", 2", 3", 4", 5", 6"
Type: Double Rod **Maximum Stroke:** 19"
Options: C, F, M, B, W, V, P6, P7, P8, N



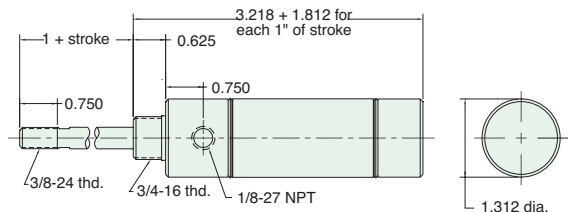
Nuts included, but not shown on drawing

SRR-20-□-□

Reverse Acting



Mount: Stud **Standard Stroke Lengths:** 1/2", 1", 1-1/2", 2", 3", 4"
Type: Rotating Rod **Spring Compressed:** 10 lbs. **Spring At Rest:** 4.5 lbs.
Options: M, B, H, W, V, N **Maximum Stroke:** 14" For M option add 0.125



Nuts included, but not shown on drawing

1 1/4" BORE STAINLESS STEEL CYLINDER

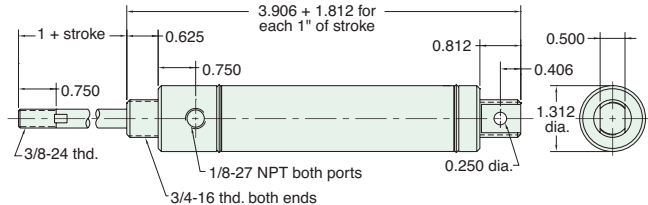


Note: The 1 1/4" bore is also available with a 7/16-20 threaded rod. Order -LR option.

URR-20-□-□

Reverse Acting

Mount: Universal **Standard Stroke Lengths:** 1/2", 1", 1-1/2", 2", 3", 4"
Type: Rotating Rod **Spring Compressed:** 10 lbs. **Spring At Rest:** 4.5 lbs.
Options: M, B, H, W, V, P2, N **Maximum Stroke:** 14" For M option add 0.125



Furnished without nut(s). See Chart on Page 38.

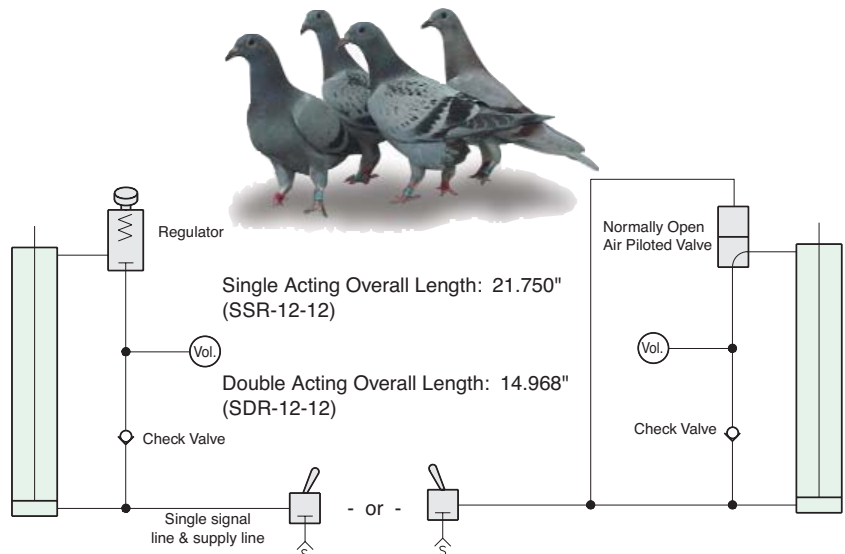
APPLICATION STORY

ap-pli-ca-tion \ap-lī-kā-shən\ n 1 : the act of applying 2 : assiduous attention 3 : REQUEST; also : a form used in making a request 4 : something placed or spread on a surface 5 : capacity for use

Clippard Applications Have Gone to the Birds

Pneumatic automation plays a role on the roof tops of Clippard. Over time, pigeons become unruffled by the presence of a motionless plastic owl. By automating several owls throughout the area to pop up out of 8" PVC pipes, the pigeon problem has flown away.

While this application only requires a single acting cylinder, they tend to be longer than double acting cylinders of the same stroke. To fit the cylinder inside of the owl and have enough stroke to raise it fully, these wise old birds used double acting cylinders with a little circuitry to make them act like single acting cylinders.



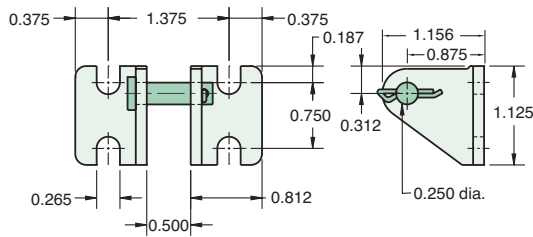


1 1/4" BORE ACCESSORIES



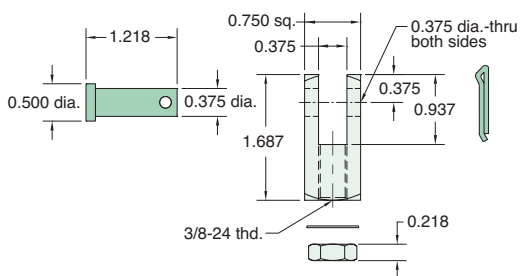
CB-2095

Clevis Bracket
Material: Steel, bright zinc plated



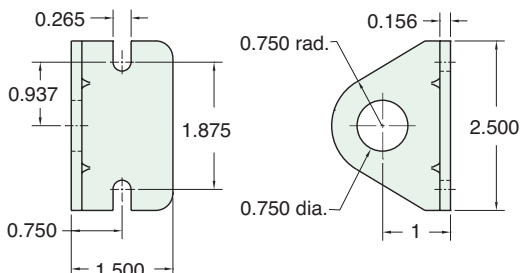
RC-2081

Rod Clevis
Material: Steel, electroless nickel plate



FB-2491

Foot Bracket
Material: Steel, bright zinc plated



MOUNTING NUTS

Stud Nut

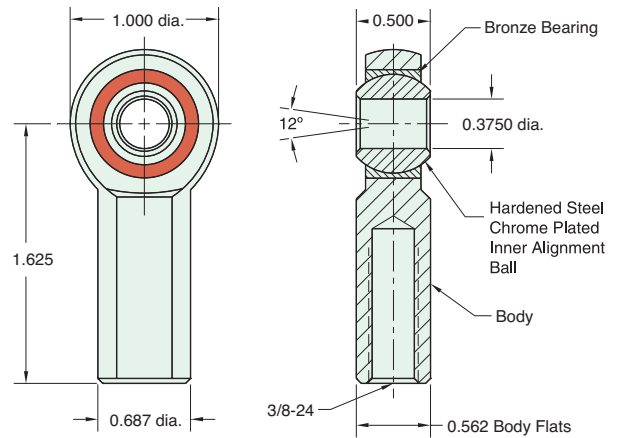
Part Number	Across Flats	Nut Thickness	Nut (Thread)
N12-16	1 3/32"	27/64"	3/4-16

Rod Nut

Part Number	Across Flats	Nut Thickness	Nut (Thread)
N06-24A	9/16"	7/32"	3/8-24
N06-24B	1/2"	1/8"	3/8-24

RE-2085

Rod End
Material: Steel, bright zinc plated body



Lockwasher

Locknut

Max. Static Radial Load: 3950 lbs.
Fits Rod Thread Size: 3/8-24