

2 1/2" BORE STAINLESS STEEL CYLINDER



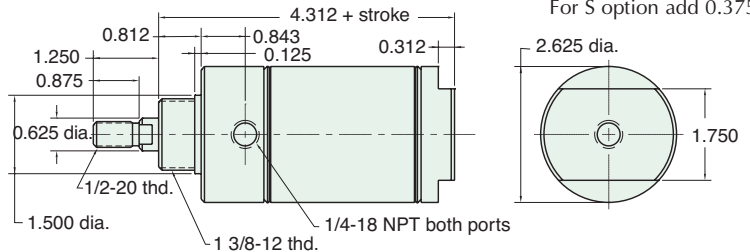
SDR-40-□-□

Double Acting



Mount: Stud **Standard Stroke Lengths:** 1", 2", 3", 4", 5", 6"
Type: Rotating Rod **Maximum Stroke:** 39"
Options: C, F, R, M, W, V, P6, P7, P8, S, N

Bumpers are standard
 For M option add 0.312
 For S option add 0.375



Nut included, but not shown on drawing
 For C, F, & R options use side ported rear head

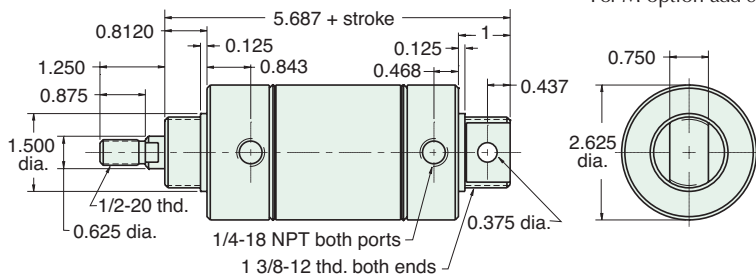
UDR-40-□-□

Double Acting



Mount: Universal **Standard Stroke Lengths:** 1", 2", 3", 4", 5", 6", 7", 8", 10", 12"
Type: Rotating Rod **Maximum Stroke:** 38"
Options: C, F, R, M, W, V, P2, P3, P4, P5, P6, P7, P8, N

Bumpers are standard
 For M option add 0.312



Furnished without nut(s). See Chart on Page 56.

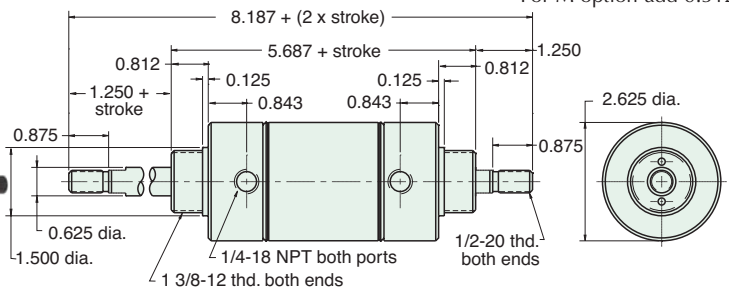
SDD-40-□-□

Double Acting



Mount: Stud **Standard Stroke Lengths:** 1", 2", 3", 4", 5", 6", 8", 10", 12"
Type: Double Rod **Maximum Stroke:** 18"
Options: C, F, M, W, V, P6, P7, P8, N

Bumpers are standard
 For M option add 0.312



Nut included, but not shown on drawing

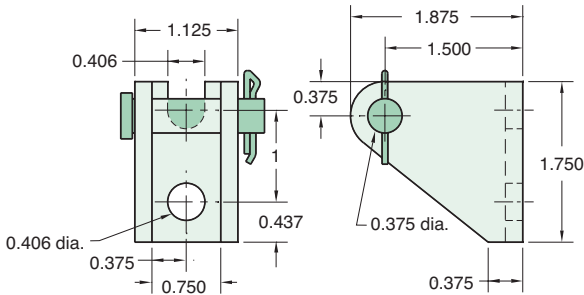


2 1/2" BORE ACCESSORIES



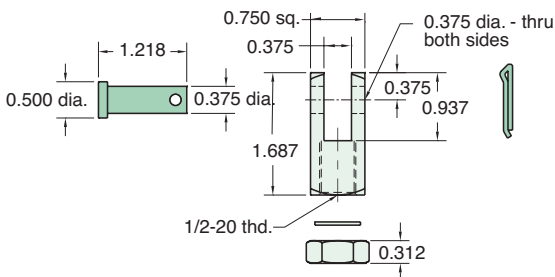
CB-3295

Clevis Bracket
Material: Steel, bright zinc plated



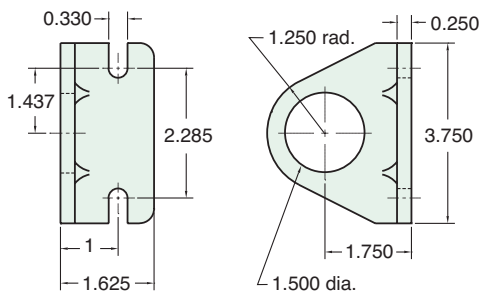
RC-3281

Rod Clevis
Material: Steel, electroless nickel plate



FB-4091

Foot Bracket
Material: Steel, bright zinc plated



MOUNTING NUTS

Stud Nut

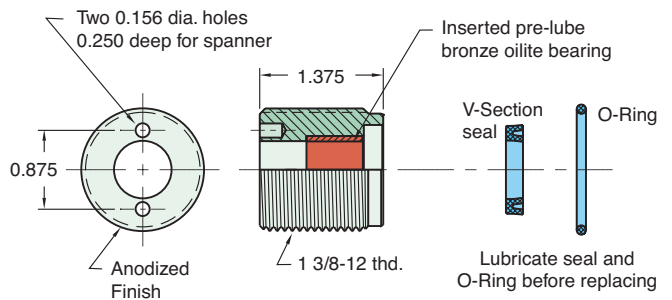
Part Number	Across Flats	Nut Thickness	Nut (Thread)
N22-12	1 7/8"	1/2"	1 3/8-12

Rod Nut

Part Number	Across Flats	Nut Thickness	Nut (Thread)
N08-20	3/4"	5/16"	1/2-20

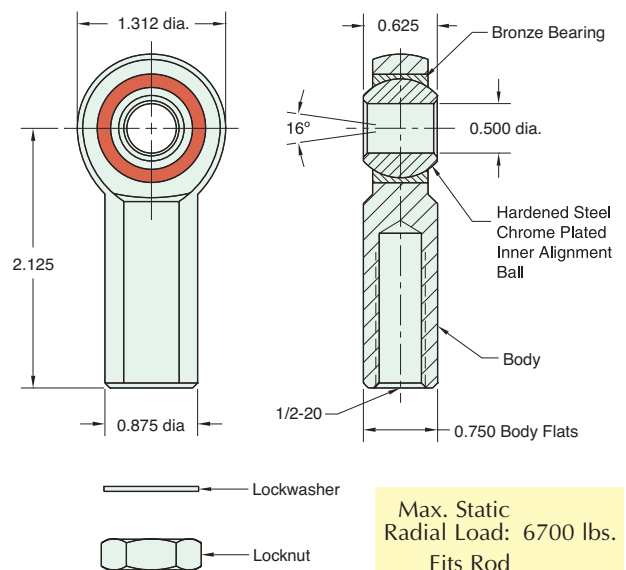
RK-4099

Replaceable Rod Seal
Material: Aluminum body



RE-3285

Rod End
Material: Steel, bright zinc plated body



Max. Static Radial Load: 6700 lbs.
Fits Rod Thread Size: 1/2-20