

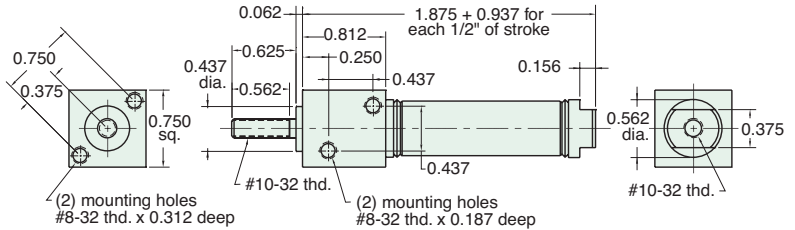
1/2" BORE STAINLESS STEEL CYLINDER



FSR-08-□-□

Single Acting

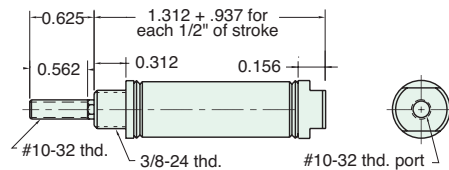
Mount: Front **Standard Stroke Lengths:** 1/2", 1", 1-1/2", 2", 3", 4"
Type: Rotating Rod **Spring Compressed:** 2 lbs. **Spring At Rest:** 0.9 lbs.
Options: M, B, H, V, S, N, W **Maximum Stroke:** 23" For B option add 0.500
 For M option add 0.312
 For S option add 0.187



SSN-08-□-□

Single Acting

Mount: Stud **Standard Stroke Lengths:** 1/2", 1", 1-1/2", 2", 3", 4"
Type: Non-Rotating Rod **Spring Compressed:** 2 lbs. **Spring At Rest:** 0.9 lbs.
Options: M, B, H, V, S, N **Maximum Stroke:** 23" For B option add 0.500
 For M option add 0.312
 For S option add 0.187

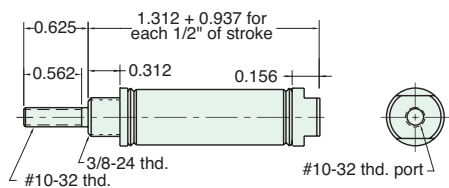


Nuts included, but not shown on drawing

SSR-08-□-□

Single Acting

Mount: Stud **Standard Stroke Lengths:** 1/2", 1", 1-1/2", 2", 3", 4"
Type: Rotating Rod **Spring Compressed:** 2 lbs. **Spring At Rest:** 0.9 lbs.
Options: M, B, H, V, S, N, W **Maximum Stroke:** 23" For B option add 0.500
 For M option add 0.312
 For S option add 0.187

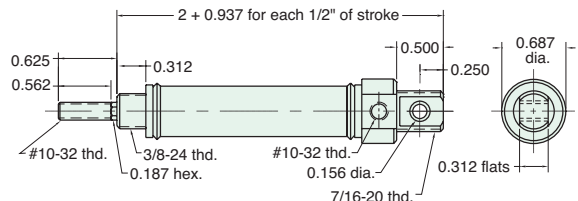


Nuts included, but not shown on drawing

USN-08-□-□

Single Acting

Mount: Universal **Standard Stroke Lengths:** 1/2", 1", 1-1/2", 2", 3", 4"
Type: Non-Rotating Rod **Spring Compressed:** 2 lbs. **Spring At Rest:** 0.9 lbs.
Options: M, B, H, V, P6, N **Maximum Stroke:** 23" For B option add 0.500
 For M option add 0.312



Furnished without nut(s). See Chart on Page 14.



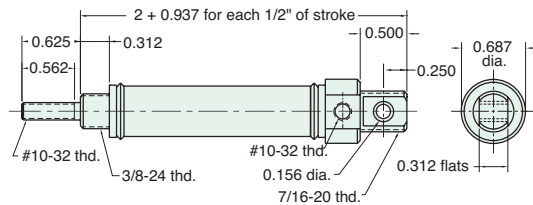
1/2" BORE STAINLESS STEEL CYLINDER

USR-08-□-□

Single Acting

Mount: Universal **Standard Stroke Lengths:** 1/2", 1", 1-1/2", 2", 3", 4"
Type: Rotating Rod **Spring Compressed:** 2 lbs. **Spring At Rest:** 0.9 lbs.
Options: M, B, H, V, P6, N, W **Maximum Stroke:** 23"

For B option add 0.500
 For M option add 0.312



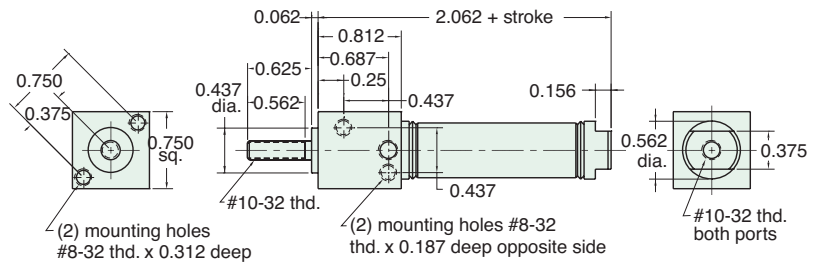
Furnished without nut(s). See Chart on Page 14.

FDR-08-□-□

Double Acting

Mount: Front **Standard Stroke Lengths:** 1/2", 1", 1-1/2", 2", 3", 4"
Type: Rotating Rod **Maximum Stroke:** 43"
Options: M, B, V, P6, P7, P8, S, N, W

For B option add 0.500
 For M option add 0.312
 For S option add 0.187

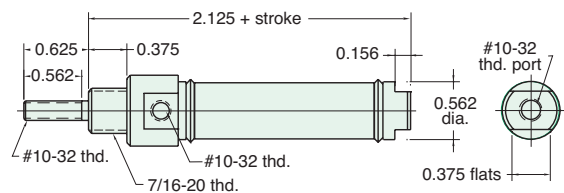


SDR-08-□-□

Double Acting

Mount: Stud **Standard Stroke Lengths:** 1/2", 1", 1-1/2", 2", 3", 4"
Type: Rotating Rod **Maximum Stroke:** 43"
Options: M, B, V, P6, P7, P8, S, N, W

For B option add 0.500
 For M option add 0.312
 For S option add 0.187



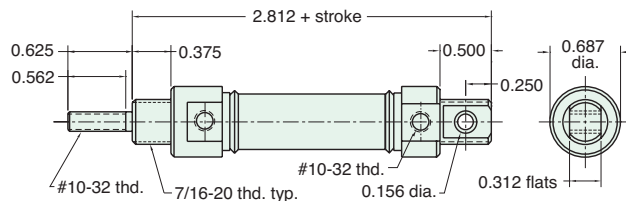
Nut included, but not shown on drawing

UDR-08-□-□

Double Acting

Mount: Universal **Standard Stroke Lengths:** 1/2", 1", 1-1/2", 2", 3", 4"
Type: Rotating Rod **Maximum Stroke:** 42"
Options: M, B, V, P2, P3, P4, P5, P6, P7, P8, N, W

For B option add 0.500
 For M option add 0.312



Furnished without nut(s). See Chart on Page 14.

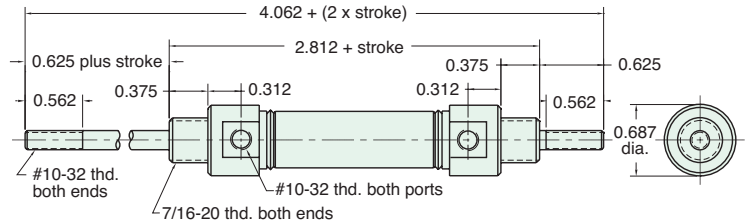
1/2" BORE STAINLESS STEEL CYLINDER



SDD-08-□-□

Double Acting

Mount: Stud **Standard Stroke Lengths:** 1/2", 1", 1-1/2", 2", 3", 4"
Type: Double Rod **Maximum Stroke:** 20" For B option add 0.500
Options: M, B, V, P6, P7, P8, N, W For M option add 0.312

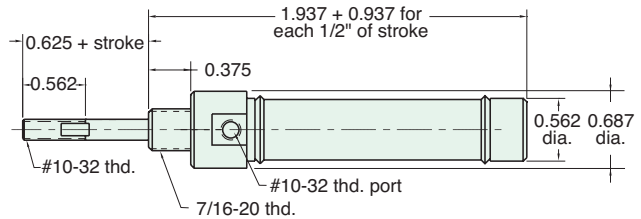


Nut included, but not shown on drawing

SRR-08-□-□

Reverse Acting

Mount: Stud **Standard Stroke Lengths:** 1/2", 1", 1-1/2", 2", 3", 4"
Type: Rotating Rod **Spring Compressed:** 2 lbs. **Spring At Rest:** 0.9 lbs.
Options: M, B, H, V, N, W **Maximum Stroke:** 15" For B option add 0.500
For M option add 0.312

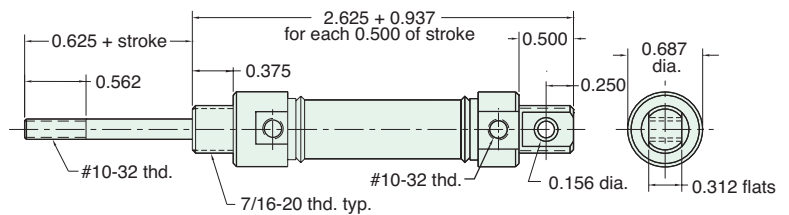


Nut included, but not shown on drawing

URR-08-□-□

Reverse Acting

Mount: Universal **Standard Stroke Lengths:** 1/2", 1", 1-1/2", 2", 3", 4"
Type: Rotating Rod **Spring Compressed:** 2 lbs. **Spring At Rest:** 0.9 lbs.
Options: M, B, H, V, P2, P3, P4, P5, P6, P7, P8, N, W **Maximum Stroke:** 15" For B option add 0.500
For M option add 0.312



Furnished without nut(s). See Chart on Page 14.

Did you know that all Clippard Cylinders are 100% tested.

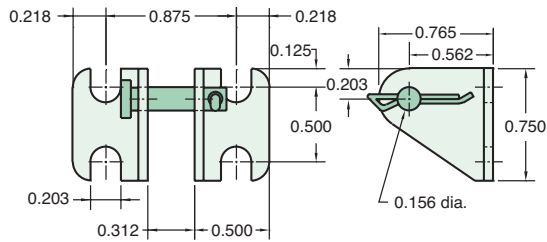


1/2" BORE ACCESSORIES



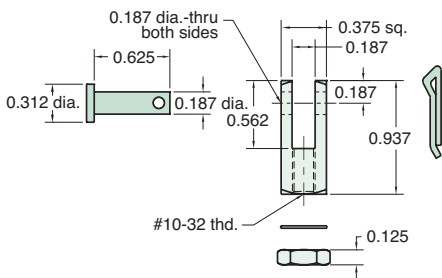
CB-0895

Clevis Bracket
Material: Steel, bright zinc plated



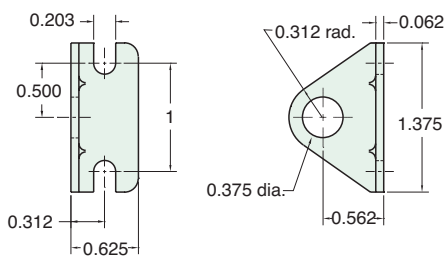
RC-0881

Rod Clevis
Material: Steel, electroless nickel plate



FB-0891

Foot Bracket
Material: Steel, bright zinc plated



MOUNTING NUTS

Stud Nut

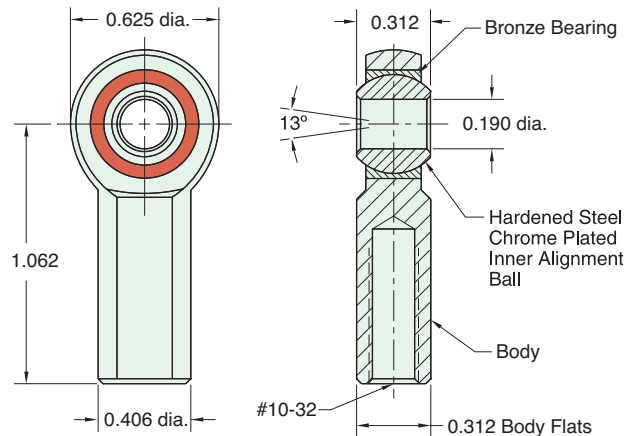
Part Number	Across Flats	Nut Thickness	Nut (Thread)
N06-24A	9/16"	7/32"	3/8-24
N06-24B	1/2"	1/8"	3/8-24
N07-20	11/16"	1/4"	7/16-20

Rod Nut

Part Number	Across Flats	Nut Thickness	Nut (Thread)
N03-32	3/8"	1/8"	#10-32

RE-0885

Rod End
Material: Steel, bright zinc plated body



Lockwasher

Locknut

Max. Static Radial Load: 1624 lbs.
Fits Rod Thread Size: #10-32

FB-0892

Foot Bracket
Material: Steel, bright zinc plated

