

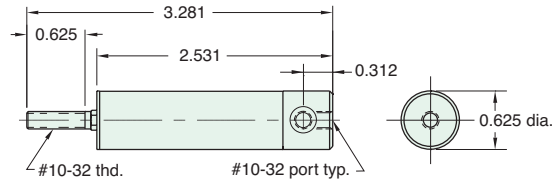


9/16" BORE BRASS MINIMATIC® CYLINDER

9PS-3/4

Mount: Body* **Available Stroke Lengths:** 3/4"
Type: Single Acting
 Spring Return Non-Rotating Shaft

Add **-N** to the end of the part number for a non-threaded rod
 *Super Structure recommended

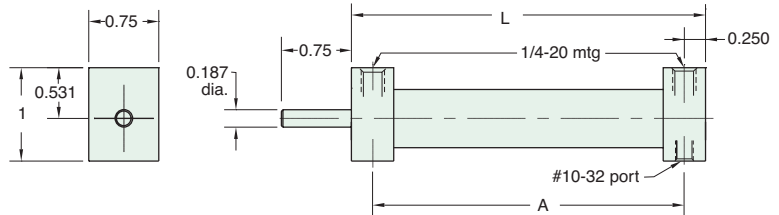


Rod nut included, but not shown on drawing

9BS-□

Mount: Block **Stroke** 3/4" 1 1/2" 2 1/4" 3"
Type: Single Acting **Length "L"** 2.750 4.218 5.593 6.937
 Spring Return **"A"** 2.312 3.750 5.125 6.500 **To order:** Add stroke length to the end of the part number

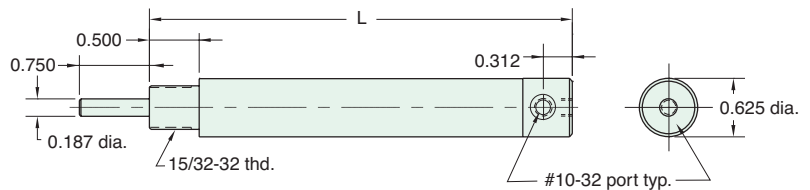
Add **-T** to the end of the part number after stroke for a #10-32 x 1/2" rod thread



9SS-□

Mount: Stud **Stroke** 3/4" 1 1/2" 2 1/4" 3"
Type: Single Acting **Length "L"** 3.031 4.531 5.875 7.250
 Spring Return **To order:** Add stroke length to the end of the part number

Add **-T** to the end of the part number after stroke for a #10-32 x 1/2" rod thread



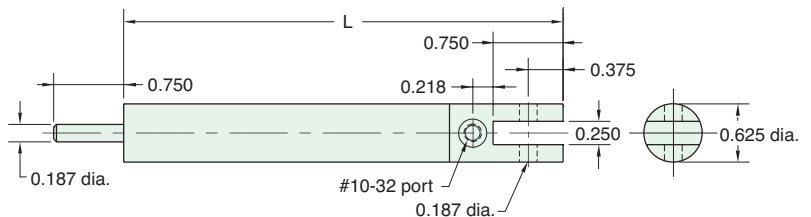
Rod nut included, but not shown on drawing

Note: On 3/4" stroke rod is hexagonal stainless steel (non-rotating) and threaded #10-32 x 5/8

9CS-□

Mount: Clevis **Stroke** 3/4" 1 1/2" 2 1/4" 3"
Type: Single Acting **Length "L"** 3.343 4.687 6.062 7.406
 Spring Return **To order:** Add stroke length to the end of the part number

Add **-T** to the end of the part number after stroke for a #10-32 x 1/2" rod thread



9/16" BORE BRASS MINIMATIC® CYLINDER



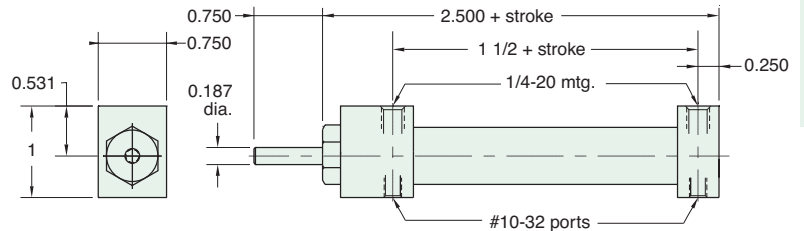
9BDS-□

Mount: Block **Available Stroke Lengths:** 1", 2", 3", 4", 5", 6"

Type: Double Acting

To order: Add stroke length to the end of the part number

Add **-T** to the end of the part number after stroke for a #10-32 x 1/2" rod thread



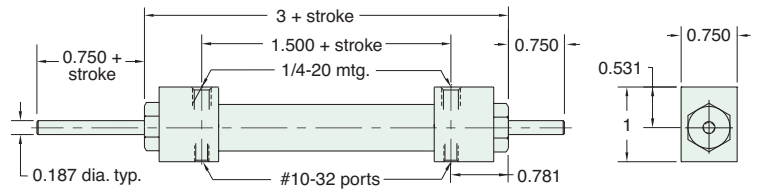
9BDD-□

Mount: Block **Available Stroke Lengths:** 1", 2", 3", 4", 5", 6"

Type: Double Acting
Double Rod

To order: Add stroke length to the end of the part number

Add **-T** to the end of the part number after stroke for a #10-32 x 1/2" rod thread



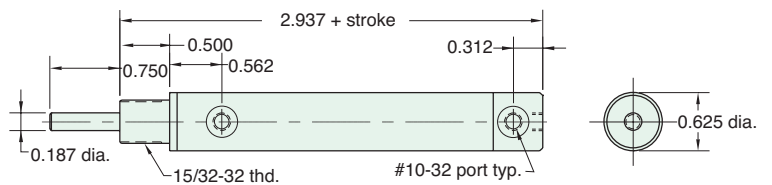
9SD-□

Mount: Stud **Available Stroke Lengths:** 1", 2", 3", 4", 5", 6"

Type: Double Acting

To order: Add stroke length to the end of the part number

Add **-T** to the end of the part number after stroke for a #10-32 x 1/2" rod thread



Nut included, but not shown on drawing

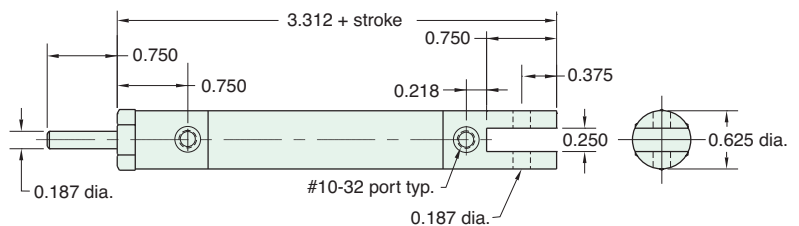
9CD-□

Mount: Clevis **Available Stroke Lengths:** 1", 2", 3", 4", 5", 6"

Type: Double Acting

To order: Add stroke length to the end of the part number

Add **-T** to the end of the part number after stroke for a #10-32 x 1/2" rod thread



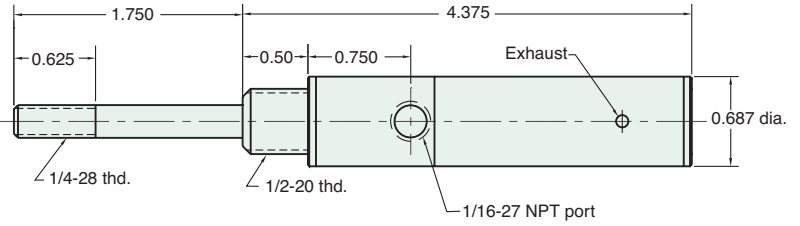


9/16" BORE BRASS HEAVY DUTY CYLINDER

9SS-AR-1

Mount: Stud **Available Stroke Lengths:** 1"
Type: Single Acting
 Spring Extended

Add **-N** to the end of the part number for a non-threaded rod



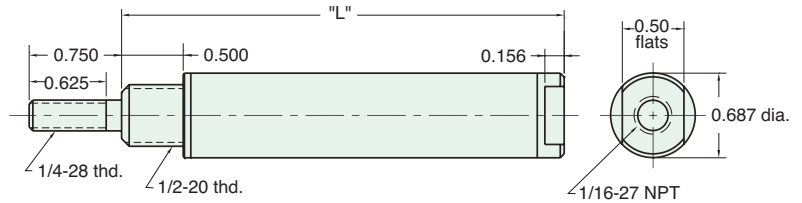
Nut included, but not shown on drawing

H9S-□S

Mount: Stud **Stroke** 1" | 2" | 3"
Type: Single Acting Spring Return **Length "L"** 3.593 | 5.250 | 6.906

To order: Indicate stroke in box □

Add **-N** to the end of the part number for a non-threaded rod



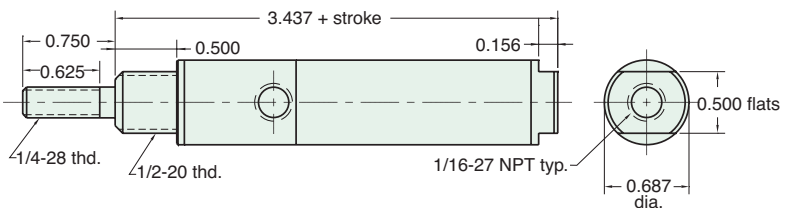
Nut included, but not shown on drawing

H9S-□D

Mount: Stud **Available Stroke Lengths:** 1", 2", 3", 4", 5", 6"
Type: Double Acting

To order: Indicate stroke in box □

Add **-N** to the end of the part number for a non-threaded rod



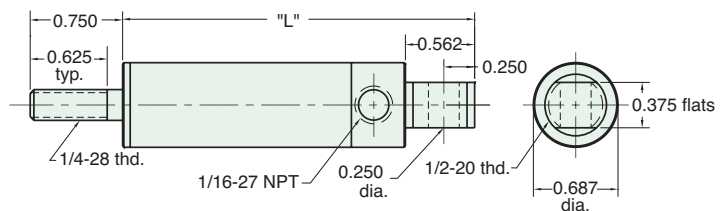
Nut included, but not shown on drawing

H9C-□S

Mount: Clevis **Stroke** 1" | 2" | 3"
Type: Single Acting Spring Return **Length "L"** 3.875 | 5.531 | 7.187

To order: Indicate stroke in box □

Add **-N** to the end of the part number for a non-threaded rod



Nut included, but not shown on drawing

9/16" BORE BRASS HEAVY DUTY CYLINDER



Consult factory for hydraulic applications

Note: Maximum recommended hydraulic working pressure for heavy duty cylinders is 1000 psig.

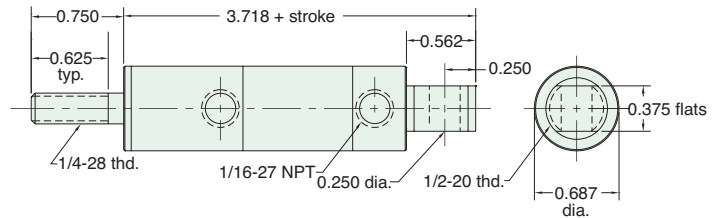
H9C-□D

Mount: Clevis **Available Stroke Lengths:** 1", 2", 3", 4", 5", 6"

Type: Double Acting

To order: Indicate stroke in box □

Add **-N** to the end of the part number for a non-threaded rod



Nuts included, but not shown on drawing

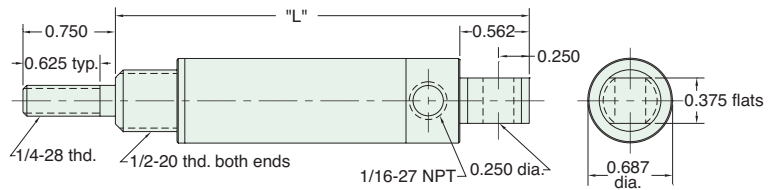
H9U-□S

Mount: Universal
Type: Single Acting
Spring Return

Stroke Length "L"	1"	2"	3"
	4.375"	6.031	7.687

To order: Indicate stroke in box □

Add **-N** to the end of the part number for a non-threaded rod



Nuts included, but not shown on drawing

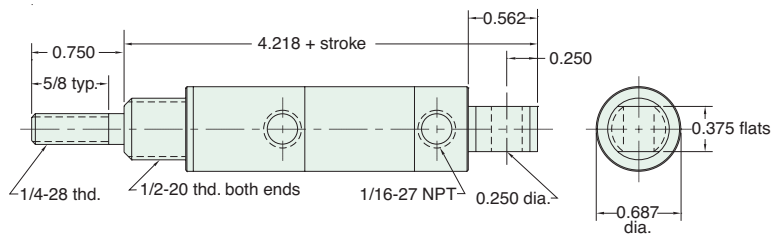
H9U-□D

Mount: Universal **Available Stroke Lengths:** 1", 2", 3", 4", 5", 6"

Type: Double Acting

To order: Indicate stroke in box □

Add **-N** to the end of the part number for a non-threaded rod



Nuts included, but not shown on drawing

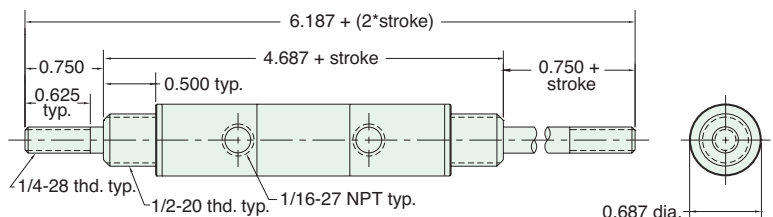
H9D-□D

Mount: Stud **Available Stroke Lengths:** 1", 2", 3", 4", 5", 6"

Type: Double Acting
Double Rod

To order: Indicate stroke in box □

Add **-N** to the end of the part number for a non-threaded rod



Nuts included, but not shown on drawing