

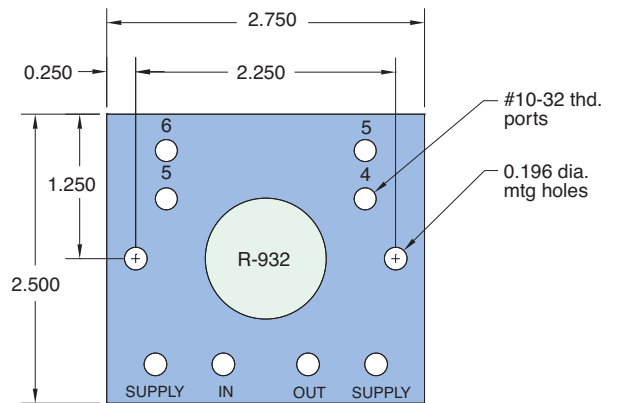
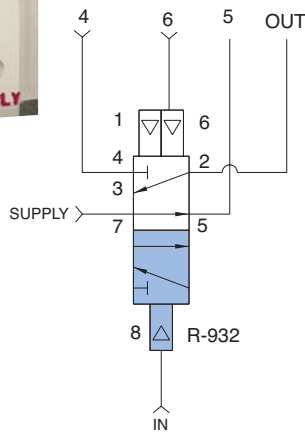
STANDARD PNEUMATIC CIRCUIT BOARDS



CM-027

Circuit Board for R-932 Sequencing System Using 1 Modular Valve

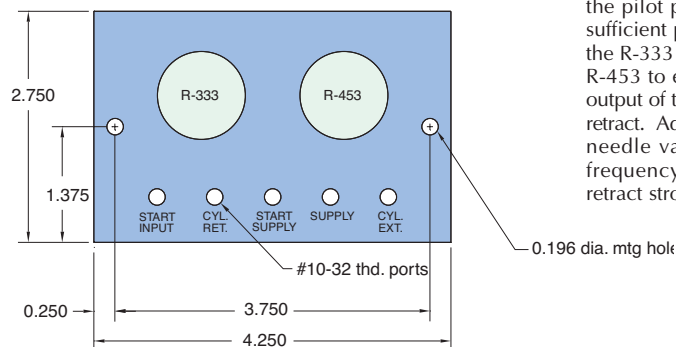
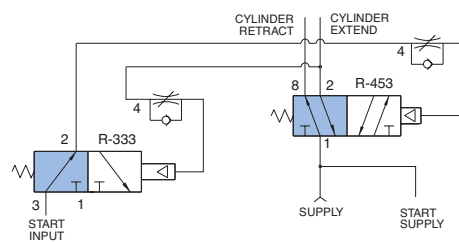
Size: 2 3/4" x 2 1/2" x 9/16" thick - 1 module
Use: Single valve sequence circuit board used as an expansion unit. #10-32 port connections provided for signal inputs, step outputs, supply and jumper connections for linking multiple boards together. May serve as final segment of circuit or be inserted between two other sequencing subplates.



CM-028

Circuit Board For Autocycling of Double Acting Cylinder

Size: 4 1/4" x 2 3/4" x 9/16" thick - 2 modules
Use: For automatic cycling of double acting cylinders without the use of limit valves or magnetic sensors.



Operation: With no start input, turning supply air on will produce output from cylinder retract (port 8) of R-453. Sending signal to start input passes through normally open R-333, ports 3 to 2, and is metered through flow control circuit of R-453 shifts output to cylinder extend (port 2). This also sends air to the flow control circuit of the R-333 which meters air into the pilot port of the R-333. When sufficient pilot pressure is reached, the R-333 closes allowing port 4 of R-453 to exhaust, thereby shifting output of the valve back to cylinder retract. Adjustment of the respective needle valves allows individual frequency control of extend and retract strokes.