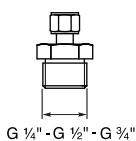
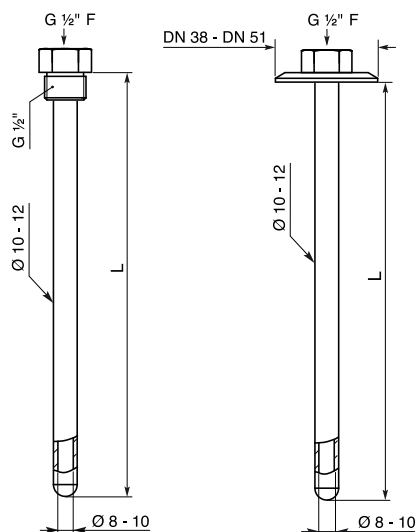
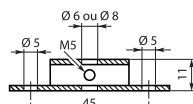


# Accessoires température

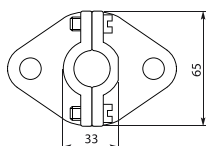
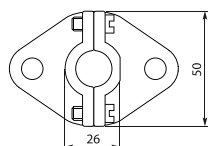
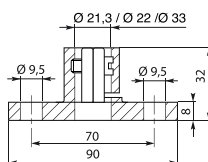
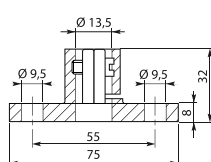
## Raccords, doigts de gant



Raccords coulissants



Bride inox



Brides ovales en fonte

### Raccords coulissants

Acier inox 316 L

Ø sonde	Filetage Gaz	Code	Filetage NPT	Code
3 mm	G 1/8"	220 202	NPT 1/8"	220 202N
6 mm	G 1/4"	220 200	NPT 1/4"	220 200N
6 mm	G 1/2"	220 205	NPT 1/2"	220 205N
8 mm	G 1/2"	218 305	NPT 1/2"	218 305N
8 mm	G 3/4"	218 306	NPT 3/4"	218 306N

### Doigts de gant pour sonde Ø 6 mm

Mécano-soudé - acier inox 316 L - G 1/2" femelle

L [mm]	Filetage	Clamp	
		DN 38-Férule 50,5 mm	DN 51-Férule 64 mm
50	G 1/2"	Code 220 215C38	Code 220 215C51
100	G 1/2"	Code 220 220C38	Code 220 220C51
150	G 1/2"	Code 220 225C38	Code 220 225C51
200	G 1/2"		
250	G 1/2"		
300	G 1/2"		
400	G 1/2"		

### Doigts de gant pour sondes Ø 8 mm

Mécano-soudé - acier inox 316 L - G 1/2" femelle

L [mm]	Filetage	Doigt de gant clamp	
		DN 38 (1,5") - Férule 50.5mm	DN 51 (2") - Férule 64 mm
50	G 1/2"	Code 218 363C38	Code 218 363C51
100	G 1/2"	Code 218 365C38	Code 218 365C51
160	G 1/2"	Code 218 366C38	Code 218 366C51
250	G 1/2"	Code 218 367C38	Code 218 367C51

### Brides

Inox pour Ø 6 ou 8 mm – Ovale en fonte pour Ø 21,3, Ø 22 ou Ø 33 mm

Bride en inox		Brides en fonte	
Ø sonde	Code	Ø sonde	Code
6 mm	229 950	13,5 mm	229 900
8 mm	229 960	15 mm	229 910
		21,3 mm	229 920