



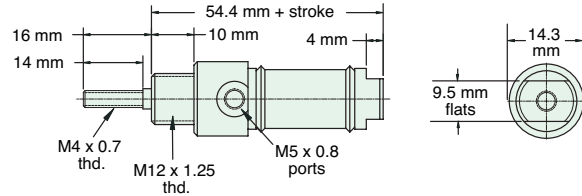
16 MM BORE STAINLESS STEEL METRIC CYLINDER

M-SDR-10-□-□

Double Acting



Mount: Stud
Type: Rotating Rod
Options: B, V
Standard Stroke Lengths: 10 mm, 25 mm, 40 mm, 50 mm, 80 mm, 100 mm, 125 mm, 160 mm, 200 mm, 250 mm



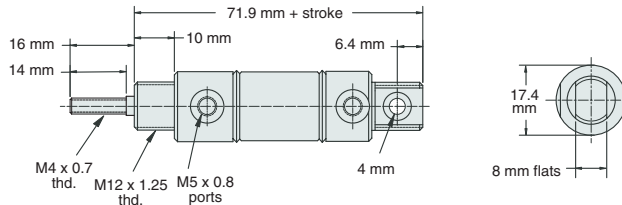
Nut included, but not shown on drawing

M-UDR-10-□-□

Double Acting



Mount: Universal
Type: Rotating Rod
Options: B, V
Standard Stroke Lengths: 10 mm, 25 mm, 40 mm, 50 mm, 80 mm, 100 mm, 125 mm, 160 mm, 200 mm, 250 mm
 Mounting nuts not included. Part No. NM12-125 may be ordered separately.



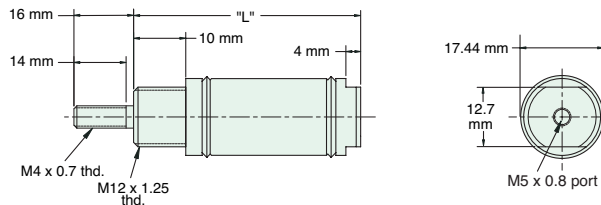
Furnished without nut(s). Order Part No. NM12-125.

M-SSR-10-□-□

Single Acting



Mount: Stud
Type: Rotating Rod
Options: B, V
Standard Stroke Lengths: 10 mm, 25 mm, 40 mm, 50 mm, 80 mm, 100 mm, 125 mm, 160 mm



Nut included, but not shown on drawing

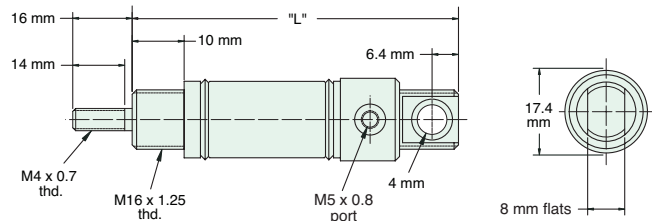
"L" (mm) for Standard Strokes								
Stroke	10	25	40	50	80	100	125	160
	56	83	120	130	193	224	260	329

M-USR-10-□-□

Single Acting



Mount: Universal
Type: Rotating Rod
Options: B, V
Standard Stroke Lengths: 10 mm, 25 mm, 40 mm, 50 mm, 80 mm, 100 mm, 125 mm, 160 mm



Furnished without nut(s). Order Part No. NM12-125.

"L" (mm) for Standard Strokes								
Stroke	10	25	40	50	80	100	125	160
	73	100	137	141	210	241	278	346