

# 20 MM BORE STAINLESS STEEL METRIC CYLINDER



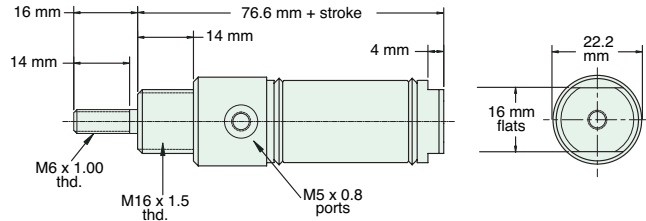
## M-SDR-12-□-□

Double Acting



**Mount:** Stud  
**Type:** Rotating Rod  
**Options:** B, R, V

**Standard Stroke Lengths:** 10 mm, 25 mm, 40 mm, 50 mm, 80 mm, 100 mm, 125 mm, 160 mm, 200 mm, 250 mm, 300 mm, 350 mm, 400 mm, 450 mm, 500 mm, 550 mm, 600 mm



Nut included, but not shown on drawing

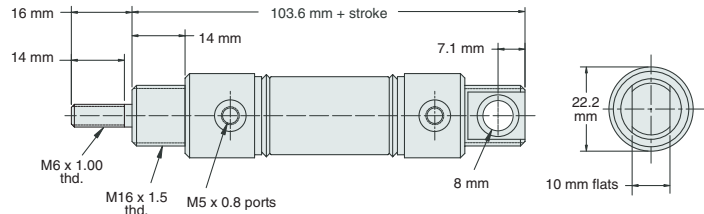
## M-UDR-12-□-□

Double Acting



**Mount:** Universal  
**Type:** Rotating Rod  
**Options:** B, R, V

**Standard Stroke Lengths:** 10 mm, 25 mm, 40 mm, 50 mm, 80 mm, 100 mm, 125 mm, 160 mm, 200 mm, 250 mm, 300 mm, 350 mm, 400 mm, 450 mm, 500 mm, 550 mm, 600 mm



Furnished without nut(s). Order Part No. NM16-150.

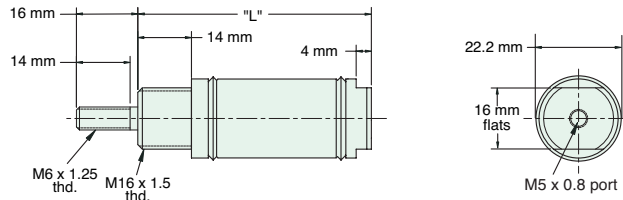
## M-SSR-12-□-□

Single Acting



**Mount:** Stud  
**Type:** Rotating Rod  
**Options:** B, R, V

**Standard Stroke Lengths:** 10 mm, 25 mm, 40 mm, 50 mm, 80 mm, 100 mm, 125 mm, 160 mm



Nut included, but not shown on drawing

"L" (mm) for Standard Strokes								
Stroke	10	25	40	50	80	100	125	160
	68	83	116	126	191	211	254	324

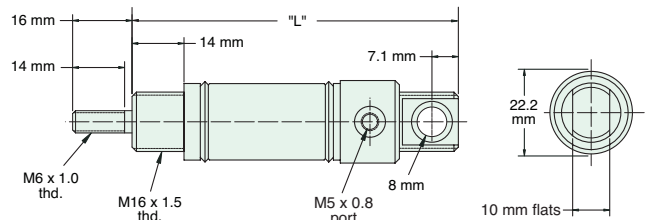
## M-USR-12-□-□

Single Acting



**Mount:** Universal  
**Type:** Rotating Rod  
**Options:** B, R, V

**Standard Stroke Lengths:** 10 mm, 25 mm, 40 mm, 50 mm, 80 mm, 100 mm, 125 mm, 160 mm



Furnished without nut(s). Order Part No. NM16-150.

"L" (mm) for Standard Strokes								
Stroke	10	25	40	50	80	100	125	160
	95	110	143	153	218	238	281	351