



## MODULAR MULTIPLE 3-WAY VALVES

### R-351



#### Dual Normally Closed 3-Way Valve

##### Features:

- Micro gap construction - snap action and no blow by
- Two independent valves in one module
- Saves space

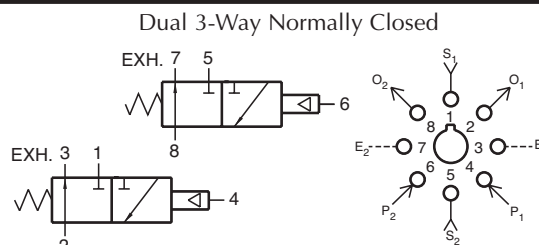
##### Performance:

**Flow:** 9 scfm @ 100 psig; 255 l/min @ 6.9 bars

**Pilot Pressure Minimum:** 40 psig; 2.8 bars

**Temperature:** 32 to 180° F

**Working Pressure:** 0 to 150 psig; 0 to 10.3 bars



##### Description:

R-351 is a dual element combination of 2 independent, spring return, 3-way valves in a single manifold, set-up for normally-CLOSED usage only. Ports 3 and 7 are exhausts to atmosphere and cannot be restricted.

### R-352



#### Dual 3-Way Valve

##### Features:

- Micro gap construction - snap action and no blow by
- Two independent units in one module
- Common supply eliminates extra piping

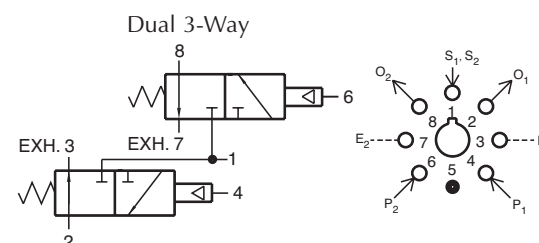
##### Performance:

**Flow:** 9 scfm @ 100 psig; 255 l/min @ 6.9 bars

**Pilot Pressure Minimum:** 40 psig; 2.8 bars

**Temperature:** 32° to 180° F

**Working Pressure:** 0 to 150 psig; 0 to 10.3 bars



##### Description:

R-352 is a dual element combination consisting of 2 independent, spring return, 3-way normally-CLOSED valves with a common inlet. Ports 3 and 7 are exhausts to atmosphere, and can not be restricted.