

# MODULAR 4-WAY AMPLIFIED PILOT VALVES



## R-471



### 4-Way Amplified Pilot Valve

#### Features:

- Micro gap construction - snap action and no blow by
- Clippard 3200 bleed type amplifier section assures long life and repeatability
- Standard octoport plug-in design

#### Performance:

**Flow:** 9 scfm @ 100 psig; 255 l/min @ 6.9 bars

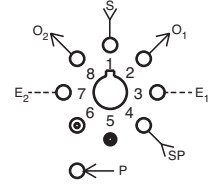
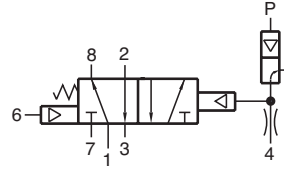
**Pilot Pressure (psig) Minimum:** 8" H<sub>2</sub>O on 1" H<sub>2</sub>O off

**Pilot Supply Pressure:** 45 to 100 psig; 3.1 to 6.9 bars

**Temperature:** 32° to 180° F

**Working Pressure:** 0 to 150 psig; 0 to 10.3 bars

**Bleed Flow (amplifier orifice):** 0.010" (0.25)



#### Description:

R-471 is a 4-way, fully ported, spring return, amplified pilot valve. The R-471 is a hybrid combination of the R-401 and model 3200 snap action valve.

## R-472



### 4-Way Interface Valve

#### Features:

- Micro gap construction - snap action and no blow by
- Clippard 3200 bleed type amplifier section assures long life and repeatability
- Standard octoport plug-in design

#### Performance:

**Flow:** 9 scfm @ 100 psig; 255 l/min @ 6.9 bars

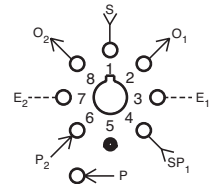
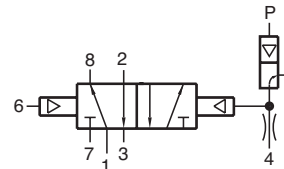
**Pilot pressure (psig) Minimum:** 8" H<sub>2</sub>O on 1" H<sub>2</sub>O off

**Pilot Supply Pressure:** 45 to 100 psig; 3.1 to 6.9 bars

**Temperature:** 32° to 180° F

**Working Pressure:** 0 to 150 psig; 0 to 10.3 bars

**Bleed Flow (amplifier orifice):** 0.010" (0.25)



#### Description:

R-472 is a 4-way, fully ported, two position, amplified pilot valve. R-472 is a hybrid combination of the R-402 and model 3200 snap action valve.