



VACUUM GENERATOR

R-781-□



Modular Vacuum Generator

Turn Vacuum on/off

Features:

- Micro gap construction - snap action and no blow by

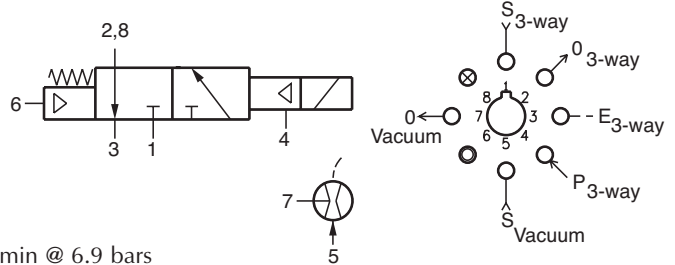
Performance:

3-Way Valve

- Flow:** 9 scfm @ 100 psig; 255 l/min @ 6.9 bars
- Pilot Pressure Minimum:** 20 psig; 1.4 bars
- Temperature:** 32° to 180° F
- Working Pressure:** 0 to 150 psig; 0 to 10.3 bars

Vacuum Generator

- Vacuum (in. Hg @ 60 psig):** 25
- Vacuum Flow (scfm @ 60 psig):** 0.6
- Air Consumption (scfm @ 60 psig):** 1.7
- Temperature:** 32° to 180° F
- Available Voltage:** 6, 12, 24 VDC



Voltage	R-781-6	6 VDC
	R-781-12	12 VDC
	R-781-24	24 VDC

Power Consumption: 0.65 W @ rated voltage
Duty: Continuous duty to 150% of rated voltage

Description:

R-781 is a combination venturi vacuum generator and an independent pilot actuated electronically controlled, spring return, fully ported 3-way valve. Applying pressure at port 5 creates a vacuum at port 7. The 3-way valve can be used to turn the vacuum generator on or off or it can be used to switch the vacuum on or off. To shift the 3-way valve 40 psig is required at port 4 along with the appropriate DC voltage being applied to the solenoid.

R-782-□



Modular Vacuum Generator

Features:

- Micro gap construction - snap action and no blow by

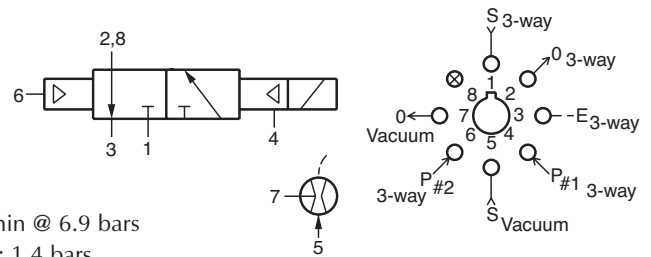
Performance:

3-Way Valve

- Flow:** 9 scfm @ 100 psig; 255 l/min @ 6.9 bars
- Pilot Pressure Minimum:** 20 psig; 1.4 bars
- Temperature:** 32° to 180° F
- Working Pressure:** 0 to 150 psig; 0 to 10.3 bars

Vacuum Generator

- Vacuum (in. Hg @ 60 psig):** 25
- Vacuum Flow:** 0.6 scfm @ 60 psig
- Air Consumption:** 1.7 scfm @ 60 psig
- Temperature:** 32° to 180° F
- Available Voltage:** 6, 12, 24 VDC



Voltage	R-782-6	6 VDC
	R-782-12	12 VDC
	R-782-24	24 VDC

Power Consumption: 0.65 W @ rated voltage
Duty: Continuous duty to 150% of rated voltage

Description:

The R-782 is a combination venturi vacuum generator and an independent pilot actuated electronically controlled, air pilot return, fully ported 3-way valve. Applying pressure at port 5 creates a vacuum at port 7. The 3-way valve can be used to turn the vacuum generator on or off or it can be used to switch the vacuum on or off. To shift the 3-way valve 20 psig is required at port 4 along with the appropriate DC voltage being applied to the solenoid. To return the valve a pilot pressure of 20 psig is required at port 6.