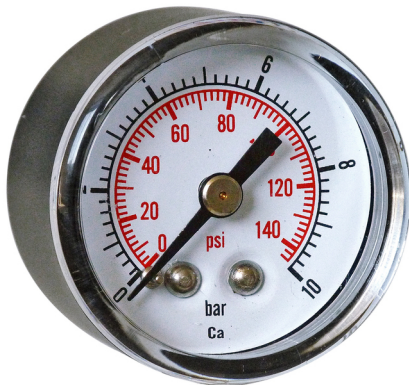


# Pressure gauges, ABS case, dry

## 3100 Series



(450 450)



(450 450P)

- ABS case
- Dry
- Ø 40 - Ø 50 - Ø 63 mm
- Pressure range 0 to 25 bar
- Accuracy 2,5
- Brass connection G 1/8", G 1/4"
- Back connection
- BSPT (0...12 bar)
- OPTION : bar/psi scale

### APPLICATIONS

ABS case pressure gauges, 3100 Series, are especially designed for pneumatic and OEM applications.

### DESCRIPTION

Models 0...12 bar in Ø 40 and 50 mm are specially dedicated to filter regulators. With the BSPT thread, they simply fit. The 3100 series pressure gauges can be made with a double scale (bar/psi).

For other measuring ranges and/or models with vertical connection, refer to the documentation for the 6000 series.

### TECHNICAL DETAILS

Pressure range	0 to 25 bar
Accuracy class	2,5
Pressure element	Bronze C tube
Movement	Brass
Case	Black plastic case
Window	Acrylic
Socket	Brass
	G 1/8" or G 1/4", according to Ø (BSPT for 12 bar)
Dial	White aluminium, black lettering
Graduations	bar
	bar/psi
Protection	IP 43
Operating temperature	Ambient : -20...+60 °C
	Process : 0...+60 °C

**EC Conformity : The instrument meets the legal requirements of the current European Directives**



8 Av. du Gué Langlois · 77600 Bussy-Saint-Martin  
 Tel +33 (0)1 60 37 45 00 Web [www.citec.fr](http://www.citec.fr)  
 E-mail [citec@citec.fr](mailto:citec@citec.fr)

Pressure gauges, ABS case,  
 dry  
**3100 Series**

09-06-2023

D-806.01-EN-AB

PR

806-01 /1

## REFERENCES



Center back connection  
**3104 Model**

**3104 model, dry with center back connection, BSP cylindric :**

Measuring range		Ø 40 G 1/8"	Ø 50 G 1/8"	Ø 50 G 1/4"	Ø 63 G 1/4"	Ø 40 G 1/8"	Ø 50 G 1/8"
bar	psi	dry	dry	dry	dry	dry	dry
0 1 bar		450 409	450 469	450 501	450 629		
0 1,6 bar		450 410	450 470	450 502	450 630		
0 2,5 bar		450 420	450 475	450 505	450 640		
0 4 bar	0 60 psi	450 430	450 480	450 506	450 650	450 430P	
0 6 bar	0 90 psi	450 440	450 485	450 510	450 660	450 440P	450 485P
0 10 bar	0 150 psi	450 450	450 490	450 520	450 670	450 450P	450 490P
0 16 bar		450 460	450 495	450 522	450 680		
0 25 bar		450 461	450 496	450 523	450 690		

**3104 type, dry with center back connection, BSPT, specific for filter regulator**

Measuring range		BSPT Thread				
bar	psi	Ø 40 1/8"	Ø 50 1/8"	Ø 50 1/4"	Ø 40 1/8"	Ø 50 1/8"
		dry	dry	dry	dry	dry
0 12 bar	0 175 psi	450 451	450 491	450 521	450 451P	450 491P

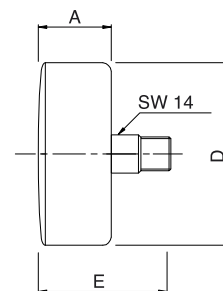
For information : 1 bar = 14,5038 psi

Double scale bar/psi :

Example : reference 3104-D-40-R-AR-1/8-P.0+10 (ref. 450 450) becomes a double scale version (bar/psi) 3104-D-40-R-AR-1/8-P.0+10B/PSI (ref. 450 450P)

## DIMENSIONS [mm]

	A	D	E	Weight [kg]
Ø 40	26	40	46	0,040
Ø 50	27	50	49	0,070
Ø 63	29	62	53	0,115



Pression - Température

8 Av. du Gué Langlois · 77600 Bussy-Saint-Martin  
Tel +33 (0)1 60 37 45 00 Web [www.citec.fr](http://www.citec.fr)  
E-mail [citec@citec.fr](mailto:citec@citec.fr)

Pressure gauges, ABS case,  
dry  
**3100 Series**

09-06-2023

D-806.01-EN-AB

PR

806-01 /2