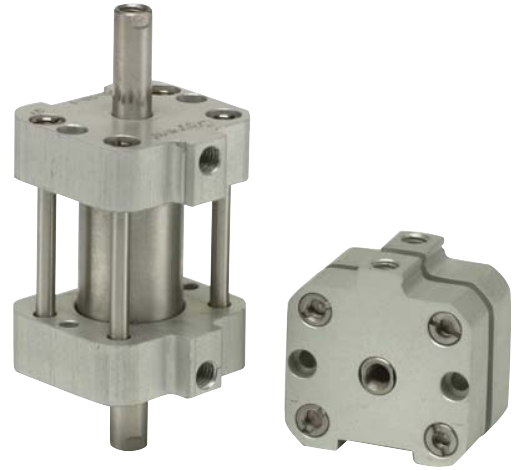
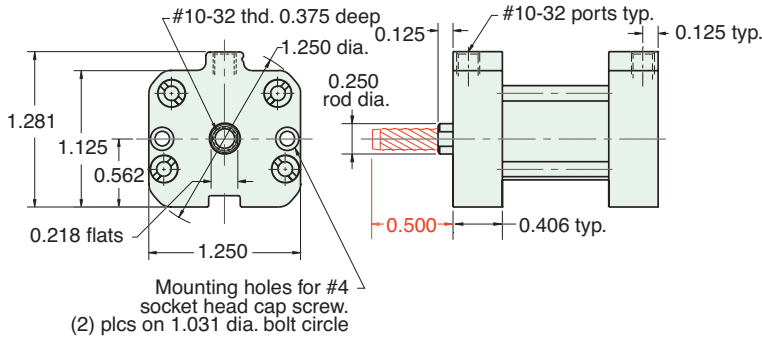


## AF - □□□ - 10 - □

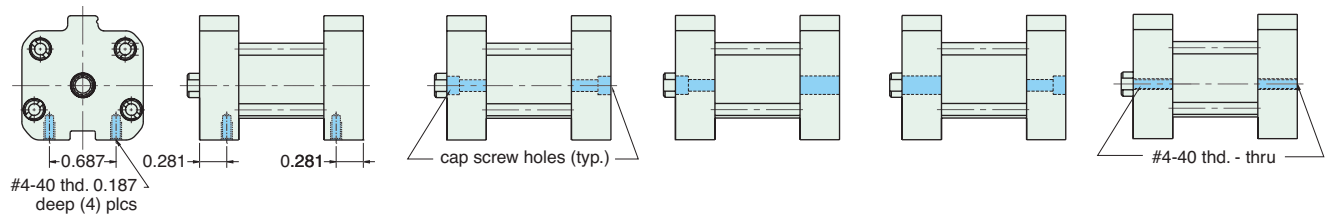


For rod with male thread option, add -T to the end of the part number after Stroke

See page 76 for Air Force One numbering system

## MOUNTING STYLES

Five mounting styles give you versatility and fast, easy installation.



Bottom Mount  
AF-Bxx-10-x

Universal Mount  
AF-Uxx-10-x

Front Mount  
AF-Fxx-10-x

Rear Mount  
AF-Rxx-10-x

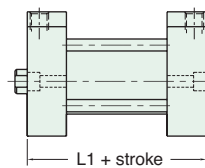
Thread Mount  
AF-Txx-10-x

## CYLINDER LENGTHS

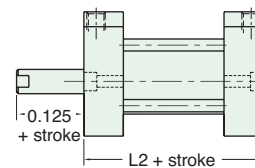
| "L" | Stroke      | Spring Return | Spring Extend |
|-----|-------------|---------------|---------------|
| L1  | 1/4" - 1"   | 13/16"        |               |
| L1  | 1 1/8" - 2" | 1 3/8"        |               |
| L1  | 2 1/8" - 3" | 1 15/16"      |               |
| L1  | 3 1/8" - 4" | 2 1/2"        |               |
| L2  | 1/4" - 1"   |               | 1 1/16"       |
| L2  | 1 1/8" - 2" |               | 1 5/8"        |
| L2  | 2 1/8" - 3" |               | 2 3/16"       |
| L2  | 3 1/8" - 4" |               | 2 3/4"        |

Overall length of body is stroke plus "L"

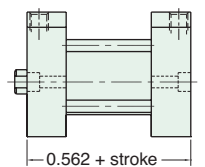
Add 7/8" for Magnetic Piston



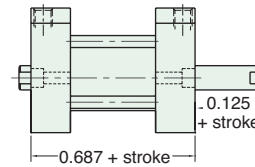
Spring Return  
AF-xSR-10-x



Spring Extend  
AF-xRR-10-x



Double Acting  
Single Rod  
AF-xDR-10-x



Double Acting  
Double Rod  
AF-xDD-10-x

| Spring Forces |            |
|---------------|------------|
| Spring Return |            |
| Compressed    | At Rest    |
| 5.750 lbs.    | 1.500 lbs. |
| Spring Extend |            |
| Compressed    | At Rest    |
| 5.750 lbs.    | 1.500 lbs. |