

# Pressure gauges, Steel case, dry

## 6000 Series



(400 150)

- Steel case
- Dry
- Ø 40 - Ø 50 - Ø 63 - Ø 80 - Ø 100 mm
- Pressure range -1 to 60 bar
- Accuracy 2,5
- Brass connection G 1/8", G 1/4", G 1/2"
- Bottom or center back connection
- With or without front flange

### APPLICATIONS

For liquides and clean gases which are not aggressive for copper alloys.

### DESCRIPTION

Steel case pressure gauges, 6000 Series, are especially suitable for general industry and pneumatic applications.

### TECHNICAL DETAILS

Pressure range	-1 to 60 bar
Design	According to EN 837-1
Accuracy class	2,5
Pressure element	≤ 40 bar : Bronze C tube ≥ 60 bar : Helical bronze tube
Movement	Brass
Case	Black steel
Bezel	Black aluminium, crimped onto the case
Front flange	Nickel plated steel
Window	Acrylic
Socket	Brass
Connection	G 1/8", G 1/4" ou G 1/2", according to Ø
Dial	White aluminium, black lettering
Graduations	bar bar/psi
Protection	IP 43
Operating temperature	Ambient : -20...+60 °C Process ≤ 40 bar : -20...+60 °C Process ≥ 60 bar : -30...+100 °C

**EC Conformity : The instrument meets the legal requirements of the current European Directives**



8 Av. du Gué Langlois · 77600 Bussy-Saint-Martin  
Tel +33 (0)1 60 37 45 00 Web [www.citec.fr](http://www.citec.fr)  
E-mail [citec@citec.fr](mailto:citec@citec.fr)

Pressure gauges, Steel case,  
dry  
**6000 Series**

09-06-2023

D-806.05-EN-AC

PR

806-05/1

## REFERENCES



Bottom connection  
**6001 Model**

- 6001 model, dry pressure gauge with bottom connection and bar graduation :

Measuring range	Ø 40 G 1/8" dry	Ø 50 G 1/4" dry	Ø 63 G 1/4" dry	Ø 80 G 1/4" dry	Ø 80 G 1/2" dry	Ø 100 G 1/2" dry
-1 0 bar	400 098	400 153	400 171	400 261	400 861	400 316
0 0,6 bar				400 260	400 860	400 315
0 1 bar	400 100	400 154	400 172	400 262	400 862	400 317
0 1,6 bar	400 110	400 155	400 173	400 263	400 863	400 318
0 2,5 bar	400 120	400 156	400 174	400 264	400 864	400 320
0 4 bar	400 130	400 157	400 175	400 265	400 865	400 330
0 6 bar	400 140	400 160	400 176	400 270	400 866	400 340
0 10 bar	400 150	400 158	400 177	400 280	400 867	400 350
0 16 bar	400 151	400 159	400 178	400 290	400 868	400 360
0 25 bar	400 152	400 161	400 179	400 300	400 869	400 370
0 40 bar			400 181	400 310	400 881	400 380
0 60 bar			400 182		400 311	400 390

- 6001 model, dry pressure gauge with bottom connection and double scale (bar/psi) :

Measuring range		Ø 40 G 1/8" dry	Ø 50 G 1/4" dry
0 4 bar	0 60 psi	400 130P	400 157P
0 6 bar	0 100 psi	400 140P	400 160P
0 10 bar	0 160 psi	400 150P	400 158P

### OPTIONS

- **Cleaning for oxygen :**  
Add X at the end of the order code (label stuck on the glass)
- **Glass window :**  
Ø 40, Ø 50 and Ø 63 : replace reference 400 xxx xxx by 440 xxx  
Other Ø : see 7470 series



Pression - Température

8 Av. du Gué Langlois · 77600 Bussy-Saint-Martin  
Tel +33 (0)1 60 37 45 00 Web [www.citec.fr](http://www.citec.fr)  
E-mail [citec@citec.fr](mailto:citec@citec.fr)

Pressure gauges, Steel case,  
dry  
**6000 Series**

09-06-2023

D-806.05-EN-AC

PR

806-05/2



Center back connection  
**6004 Model**

- **6004 Model, dry pressure gauge with center back connection and graduation in bar :**

Measuring range	Ø 40 G 1/8" dry	Ø 50 G 1/8" dry	Ø 50 G 1/4" dry	Ø 63 G 1/4" dry	Ø 80 G 1/4" dry	Ø 80 G 1/2" dry	Ø 100 G 1/2" dry
-1 0 bar	400 399	400 467	400 499	400 671	400 734	400 870	400 746
0 1 bar	400 400	400 469	400 502	400 672	400 736	400 872	400 748
0 1,6 bar	400 410	400 470	400 503	400 673	400 737	400 873	400 749
0 2,5 bar	400 420	400 472	400 505	400 674	400 738	400 874	400 750
0 4 bar	400 430	400 480	400 506	400 675	400 739	400 875	400 760
0 6 bar	400 440	400 481	400 510	400 676	400 740	400 876	400 770
0 10 bar	400 450	400 490	400 520	400 677	400 741	400 877	400 780
0 16 bar	400 460	400 491	400 522	400 678	400 742	400 878	400 790
0 25 bar		400 492	400 523	400 679	400 743	400 879	400 800
0 40 bar				400 681	400 744	400 880	400 810
0 60 bar				400 682			400 820

- **6004 Model, dry pressure gauge with center back connection and double scale (bar/psi) :**

Measuring range		Ø 40 G 1/8" dry	Ø 50 G 1/4" dry
0 4 bar	0 60 psi	400 430P	400 506P
0 6 bar	0 100 psi	400 440P	400 510P
0 10 bar	0 160 psi	400 450P	400 520P



Front flange - Center back connection  
**6006 Model**

- **6006 Model, dry pressure gauge with front flange, center back connection and graduation in bar :**  
(Only for Ø 40, Ø 50 and Ø 63)

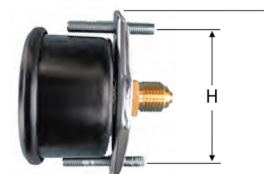


- 1- Select 6004 Model reference
- 2- Replace the reference 400 xxx by 420 xxx

Example : reference 6004, Ø 63 1/4", 0-10 bar : 400 677 becomes in 6006 (front flange) : 420 677

- **U-Clamp reference for mounting brackets :**

Ø	U-Clamp	H	L
Ø 40	401 730A	47	59
Ø 50	401 740A	57	70
Ø 63	401 760A	77	91



**NOTA : The brackets don't fit on gauges with flange.**



Pression - Température

8 Av. du Gué Langlois · 77600 Bussy-Saint-Martin  
Tel +33 (0)1 60 37 45 00 Web [www.citec.fr](http://www.citec.fr)  
E-mail [citec@citec.fr](mailto:citec@citec.fr)

Pressure gauges, Steel case,  
dry  
**6000 Series**

09-06-2023

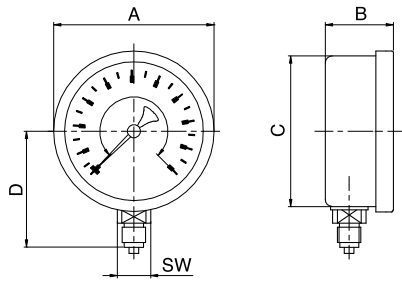
D-806.05-EN-AC

**PR**

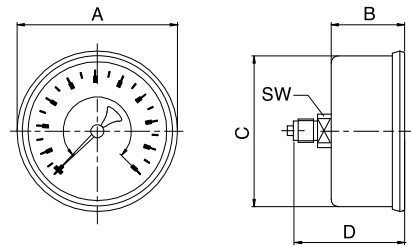
**806-05/3**

**DIMENSIONS [mm]**

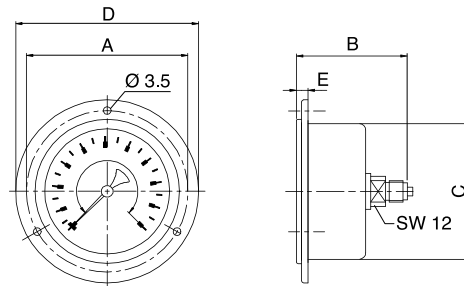
**6001 Model – Bottom connection**



**6004 Model – Center back connection**



**6006 Model – Front flange – Center back connection**



	6001 Model						6004 Model						6006 Model						
	A	B	C	D	SW	Wgt [g]	A	B	C	D	SW	Wgt [g]	A	B	C	D	E	SW	Wgt [g]
Ø 40	40	25	39	35	12	66	43	26	39	49	14	60	51	43	40	61	4	12	86
Ø 50	50	29	49	44	14	95	54	30	49	52	14	70	62	48	50,5	71	4	14	164
Ø 63	63	30	62	51	14	115	67	32	62	59	14	80	75	53	63	85	4,5	14	196
Ø 80	80	29	79	63	14	170	80	29	79	50	14	156							
Ø 100	100	30	99	71	14	205	100	30	98,5	50	14	166							

806

806



8 Av. du Gué Langlois · 77600 Bussy-Saint-Martin  
 Tel +33 (0)1 60 37 45 00 Web www.citec.fr  
 E-mail citec@citec.fr

**Pressure gauges, Steel case,  
 dry  
 6000 Series**

09-06-2023

D-806.05-EN-AC

**PR**

**806-05/4**