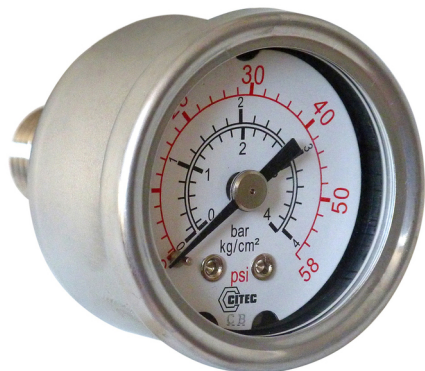
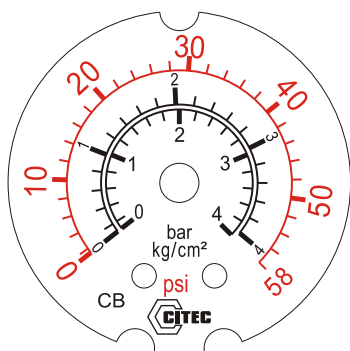


Pressure gauges for regulators 6100 Series



(404 560)



Triple scale

- Stainless Steel case
- Dry
- Ø 40, Ø 50 mm
- Pressure range 0 to 11 bar
- Accuracy : 1,6 or 2,5 according to Ø
- Back connection
- Triple graduation
bar, kg/cm², psi

APPLICATIONS

Pressure gauges for regulators specially designed for control valves.

DESCRIPTION

Stainless steel case, CITEC 6100 Series, are designed for pneumatic valves, transmitters and pressure regulators.

TECHNICAL DETAILS

Pressure range	0 to 11 bar, kg /cm ² , psi
Accuracy class	2,5 for Ø 40 1,6 for Ø 50
Pressure element	Stainless steel, C tube
Movement	Stainless steel
Case	AISI 304
Pointer	Black aluminium
Window	Polycarbonate
Socket	AISI 316
Connection	1/8" NPT or 1/4" NPT according to Ø
Dial	With aluminium Triple graduation (bar, kg/cm ² , psi)
Protection	IP 43
Operating temperature	Ambient : -20...+60 °C Process : -20...+60 °C

EC Conformity : The instrument meets the legal requirements of the current European Directives

REFERENCES



Center back
6104 Model

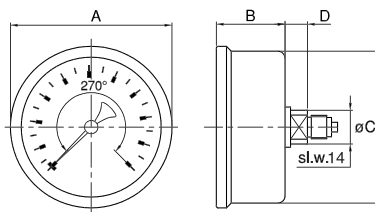
Measuring range	Ø 40, 1/8" NPT	Ø 40, 1/4" NPT	Ø 50, 1/8" NPT	Ø 50, 1/4" NPT
0 2 bar	404 500	404 550	404 600	404 650
0 4 bar	404 510	404 560	404 610	404 660
0 7 bar	404 520	404 570	404 620	404 670
0 11 bar	404 530	404 580	404 630	404 680

OPTION :

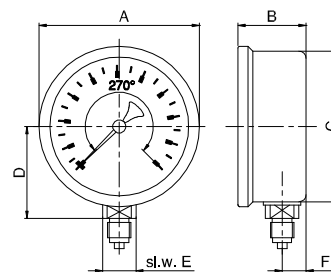
6101 Model : Bottom connection (minimum order : 25 pcs)

DIMENSIONS [mm]

Center back connection



OPTION : Bottom connection



	Back connection					OPTION : Bottom connection					
	A	B	C	D	Weight [kg]	A	B	C	D	F	Weight [kg]
Ø 40	47	25	41	7	0,075	46,5	26	41	27	8	0,070
Ø 50	57	30	52	7	0,090	57	30	52	31,5	10	0,095

806

806



Pression - Température

8 Av. du Gué Langlois · 77600 Bussy-Saint-Martin
Tel +33 (0)1 60 37 45 00 Web www.citec.fr
E-mail citec@citec.fr

Pressure gauges for
regulators
6100 Series

19-09-2023

D-806.07-EN-AE

PR

806-07 /2