

Pressure gauges stainless steel case 7110 – 7210 Series



(401 130)



(402 230)

- Watertight case, stainless steel
- Fillable
- Ø 40, Ø 63, Ø 100 mm
- Pressure range -1 to 1000 bar
- Accuracy : 1, 1,6 or 2,5 according to Ø
- Brass connection : G 1/8", G 1/4", G 1/2"
- Bottom or back mounting
- With or without front flange

APPLICATIONS

Hydraulics, pneumatics and general industrial applications

DESCRIPTION

Stainless steel case pressure gauges, 7110-7210 Series, dry or fillable, are very robust and suitable for different industrial environments.

TECHNICAL DETAILS

Pressure range	-1 to 1000 bar
Accuracy class	1 for Ø 100 1,6 for Ø 63 2,5 for Ø 40
Design	According to EN 837-1
Pressure element	≤ 40 bar : Bronze C tube ≥ 60 bar : Helical bronze tube
Movement	Brass
Case	AISI 304 Bezel AISI 304, crimped onto the case Front flange AISI 304
Window	Acrylic
Socket	Brass + restrictor screw
Connection	G 1/8", G 1/4" or G 1/2", according to Ø
Dial	White aluminium, black lettering
Graduation	bar
Protection	IP 65
Filling liquid	Glycerin

Operating temperature :

	Dry	Filled
T° ambient	-25...+60 °C	-10...+60 °C
T° process	-20...+60 °C	-10...+60 °C

EC Conformity : The instrument meets the legal requirements of the current European Directives



Pression - Température

8 Av. du Gué Langlois · 77600 Bussy-Saint-Martin
Tel +33 (0)1 60 37 45 00 Web www.citec.fr
E-mail citec@citec.fr

Pressure gauges stainless
steel case
7110 – 7210 Series

08-06-2023

D-806.11-EN-AB

PR

806-11 /1

REFERENCES



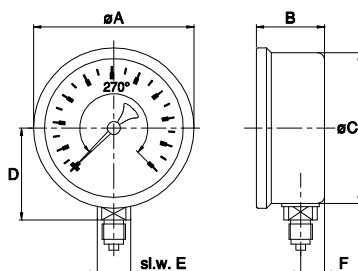
Bottom connection
7111 Model (dry) – 7211 Model (filled)

Measuring range	Ø 40 G 1/8"		Ø 63 G 1/4"		Ø 100 G 1/2"	
	dry	filled	dry	filled	dry	filled
-1 0 bar	402 340	402 680	402 000	401 080	403 000	401 222
-760mmHg 0 bar				401 070	*	401 223
-1 1,5 bar			402 015	401 126	*	*
-1 3 bar			402 016	401 127	*	*
-1 5 bar			402 017	401 128	*	*
-1 9 bar			402 018	401 129	*	*
-1 15 bar			402 019	401 131	*	*
0 1 bar	402 360	402 700	402 020	401 082	403 010	401 230
0 1,6 bar	402 370	402 710	402 030	401 086	403 012	401 235
0 2,5 bar	402 380	402 720	402 040	401 090	403 014	401 240
0 4 bar	402 390	402 730	402 050	401 100	403 016	401 245
0 6 bar	402 400	402 740	402 060	401 110	403 018	401 250
0 10 bar	402 410	402 750	402 070	401 120	403 020	401 260
0 16 bar	402 420	402 760	402 080	401 130	403 022	401 270
0 25 bar	402 430	402 770	402 090	401 140	403 024	401 280
0 40 bar	402 440	402 780	402 100	401 150	403 026	401 290
0 60 bar	402 450	402 790	402 110	401 160	403 028	401 300
0 100 bar	402 460	402 800	402 120	401 170	403 030	401 310
0 160 bar	402 470	402 810	402 130	401 180	403 032	401 320
0 250 bar	402 480	402 820	402 140	401 190	403 034	401 330
0 315 bar	402 485	402 825	402 145	401 200	403 035	401 340
0 400 bar	402 490	402 830	402 150	401 210	403 036	401 350
0 600 bar		402 840	402 160	401 220	403 037	401 360
0 1000 bar			402 165	401 221	403 038	401 361

* See series 7470 - 7570

DIMENSIONS [mm]

Bottom connection



	Bottom connection						Dry [kg]	Filled [kg]
	A	B	C	D	E	F		
Ø 40	44	26,5	40	27,0	14	10	0,070	0,090
Ø 63	68	32	62	38,5	14	10	0,125	0,195
Ø 100	107	48	100	63,0	22	17	0,520	0,820



8 Av. du Gué Langlois · 77600 Bussy-Saint-Martin
Tel +33 (0)1 60 37 45 00 Web www.citec.fr
E-mail citec@citec.fr

Pressure gauges stainless steel case
7110 – 7210 Series

08-06-2023

D-806.11-EN-AB

PR

806-11 /2

REFERENCES



Center back connection
7114 Model (dry) – 7214 Model (filled) Ø 40 and Ø 63



Lower back connection
* 7115 Model (dry) – 7214 Model (filled) Ø 100

Measuring range	Ø 40 G 1/8"		Ø 63 G 1/4"		Ø 100 G 1/2"	
	dry	filled	dry	filled	dry	filled
-1 0 bar	402 510	402 850	402 170	401 370	403 040*	401 514*
-760mmHg 0 bar			402 182	401 371	**	**
-1 1,5 bar			402 185	401 369	**	**
-1 3 bar			402 186	401 367	**	**
-1 5 bar			402 187	401 372	**	**
-1 9 bar			402 188	401 373	**	**
-1 15 bar			402 189	401 374	**	**
0 1 bar	402 530	402 870	402 190	401 375	403 050*	401 516*
0 1,6 bar	402 540	402 880	402 200	401 368	403 052*	401 517*
0 2,5 bar	402 550	402 890	402 210	401 380	403 054*	401 518*
0 4 bar	402 560	402 900	402 220	401 390	403 056*	401 519*
0 6 bar	402 570	402 910	402 230	401 400	403 058*	401 520*
0 10 bar	402 580	402 920	402 240	401 410	403 060*	401 530*
0 16 bar	402 590	402 930	402 250	401 420	403 062*	401 540*
0 25 bar	402 600	402 940	402 260	401 430	403 064*	401 550*
0 40 bar	402 610	402 950	402 270	401 440	403 066*	401 560*
0 60 bar	402 620	402 960	402 280	401 450	403 068*	401 570*
0 100 bar	402 630	402 970	402 290	401 460	403 070*	401 580*
0 160 bar	402 640	402 980	402 300	401 470	403 072*	401 590*
0 250 bar	402 650	402 985	402 310	401 480	403 074*	401 600*
0 315 bar	402 655	402 988	402 315	401 490		401 601*
0 400 bar	402 660	402 990	402 320	401 500	403 076*	401 620*
0 60 bar			402 330*	401 510*	403 078*	401 621*
0 1000 bar				401 511*		401 622*

* lower back connection / Model : 7115 - 7215 - 7118 - 7218

** See series 7470 - 7570



Center back connection with front flange
7116 Model (dry) – 7216 Model (filled)



Lower back connection with front flange
* 7118 Model (dry) – 7218 Model (filled)

- 1- Select 7114 - 7214 or 7115 - 7215 Model reference
- 2- Replace the reference 40x xxx by 42x xxx

Example : reference 7214, Ø 63 1/4", 0-10 bar : 401 410 becomes in 7216 (front flange) : 421 410

Bracket reference for panel mounting :

Ø 40 mm Bracket : 401 730B
Ø 63 mm Bracket : 401 760A -- U-clamp : 401 761A
Ø 100 mm U-clamp : 401 781A

OPTIONS

- bar/psi scale, see 2100H series for only Ø 63
- NPT thread, see 7470 series
- **Cleaning for oxygen on dry pressure gauge :**
Add X at the end of the order code (label stuck on the glass)
- Ø 50 : see 2100 series
- Glass window without flange, reference 40x xxx becomes : 44x xxx
- Glass window with flange ; Add V at the end of the reference : 42x xxxV, Ø 40 not available
- Diaphragm mounting : See chapter diaphragm



Pression - Température

8 Av. du Gué Langlois · 77600 Bussy-Saint-Martin
Tel +33 (0)1 60 37 45 00 Web www.citec.fr
E-mail citec@citec.fr

Pressure gauges stainless
steel case
7110 – 7210 Series

08-06-2023

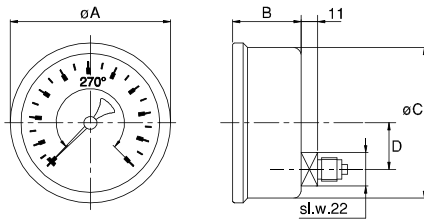
D-806.11-EN-AB

PR

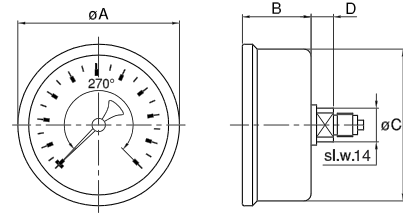
806-11 /3

DIMENSIONS [mm]

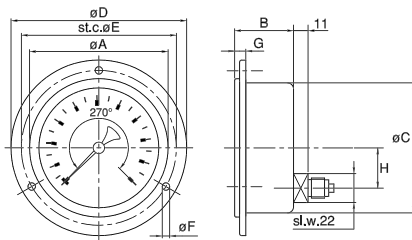
Lower back connection



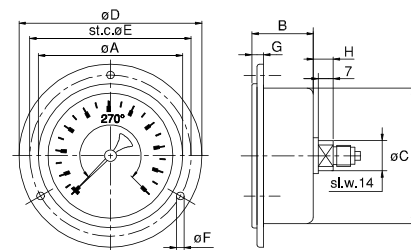
Center back connection



**Front flange
Lower back connection**



**Front flange
Center back connection**



	Center back connection						Front flange – Center back connection									
	A	B	C	D	Dry [kg]	Filled [kg]	A	B	C	D	E	F	G	H	Dry [kg]	Filled [kg]
Ø 40	44	27,0	40	7,0	0,07	0,09	44	27,0	40	61	51	3,6	7,0	7,0	0,08	0,110
Ø 63	68	32	62	9,5	0,11	0,185	68	32	62	85	75	3,6	9,0	9,5	0,15	0,205

	Lower back connection						Front flange – Lower back connection									
	A	B	C	D	Dry [kg]	Filled [kg]	A	B	C	D	E	F	G	H	Dry [kg]	Filled [kg]
Ø 100	107	48	100	33,4	0,56	0,875	107	46,5	100	132	116	4,8	7,5	33,4	0,63	0,940

806

806



8 Av. du Gué Langlois · 77600 Bussy-Saint-Martin
 Tel +33 (0)1 60 37 45 00 Web www.citec.fr
 E-mail citec@citec.fr

Pressure gauges stainless steel case
7110 – 7210 Series

08-06-2023

D-806.11-EN-AB

PR

806-11 /4