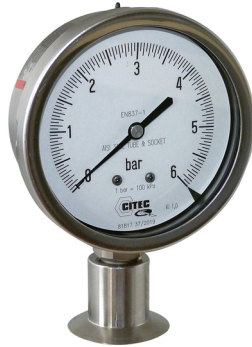


Pressure gauge with sanitary diaphragm seal 7470 + 1520 / 1521 / 1522 Series

- Sanitary process
- Pressure gauge Ø 100 with diaphragm seal
- Clamp ISO 2852, SMS 1145, DIN 11851



7470 + 1520 (Clamp ISO 2852)



7470 + 1521 (Union nut SMS 1145)



7470 + 1522 (Union nut DIN 11852)

APPLICATIONS

Pressure gauge with diaphragm seal are designed to food and pharmaceutical industries. They meet the hygiene constraints imposed in their process.

DESCRIPTION

In this document, assembled sets are presented (manometers + diaphragm seal + mounting) with unique codification.

The complete description of the pressure gauges Ø 100 are available on the data sheet 806-36 (Pressure gauges all stainless steel, agrifood, chemical, 7470-7570 Series)

TECHNICAL DETAILS

Construction Diaphragm : AISI 316 L, welded
Union nut : AISI 304 L
Pressure gauge Ø 100 : AISI 316 L

Filling liquid FDA approved oil

Operating temperature -15...+150 °C

7470 + 1520 Series

Dry pressure gauge Ø 100 with diaphragm seal Clamp ISO 2852

Diaphragm seal	-1...+3 bar	0...+6 bar	0...+10 bar	0...+16 bar
DN 38 (1)	482 570	482 571	482 572	482 573
DN 51 (1)	482 574	482 575	482 576	482 577

(1) : Be careful : external size Ø 64 mm for DN 51 -- Ø 50,5 mm for DN 38

With glycerin filled : Add L at the end of the reference

3.1 inspection certificate per EN 10204 : Reference 449 050

Clamp ISO 2852 (diaphragm only, see doc 813-10)

7470 + 1521 Series

Dry pressure gauge Ø 100 with diaphragm seal SMS 1145 nut seal

Diaphragm seal	-1...+3 bar	0...+6 bar	0...+10 bar	0...+16 bar
DN 38	482 580	482 581	482 582	482 583
DN 51	482 584	482 585	482 586	482 587

With glycerin filled : Add L at the end of the reference

3.1 inspection certificate per EN 10204 : Reference 449 050

SMS 1145 (diaphragm only, see doc 813-12)

7470 + 1522 Series

Dry pressure gauge Ø 100 with diaphragm seal DIN 11851 nut seal

Diaphragm seal	-1...+3 bar	0...+6 bar	0...+10 bar	0...+16 bar
DN 40	482 590	482 591	482 592	482 593
DN 50	482 594	482 595	482 596	482 597

With glycerin filled : Add L at the end of the reference

3.1 inspection certificate per EN 10204 : Reference 449 050

DIN 11845 (diaphragm only, see doc 813-11)