

# AIR PILOTED VALVE ACTUATORS



| MINIMUM PRESSURE REQUIRED (psig)* |                 |         |         |          |                |                |                 |        |         |         |               |
|-----------------------------------|-----------------|---------|---------|----------|----------------|----------------|-----------------|--------|---------|---------|---------------|
| Clippard Valve                    | Pressure (psig) |         |         |          | Vacuum (in Hg) | Clippard Valve | Pressure (psig) |        |         |         | Vacuum (" Hg) |
|                                   | w/MPA3          | w/MPA-5 | w/MPA-7 | w/MPA-10 |                |                | w/MVA-10        | w/MPA3 | w/MPA-5 | w/MPA-7 |               |
| ES-1 Switch                       | 12              | 4       | 2       | *        | *              | FV-3           | 41              | 15     | 7.5     | 4.0     | 8.2           |
| MAV-2 Valve                       | 23              | 8       | 4       | 2.0      | 4.2            | FV-3P          | 41              | 15     | 7.5     | 4.0     | 8.2           |
| MAV-3 Valve                       | 23              | 8       | 4       | 2.0      | 4.2            | FV-4           | 41              | 15     | 7.5     | 4.0     | 8.2           |
| MAV-4 Valve                       | 36              | 11      | 5.5     | 3.5      | 7.2            | FV-4P          | 41              | 15     | 7.5     | 4.0     | 8.2           |
| MJV-4 Valve                       | 36              | 11      | 5.5     | 3.5      | 7.2            | FV-5           | 41              | 15     | 7.5     | 4.0     | 8.2           |
| MAV-4D Valve                      | 13              | 4       | 1.5     | 1.0      | 2.0            | FV-5P          | 41              | 15     | 7.5     | 4.0     | 8.2           |
| MJV-4D Valve                      | 13              | 4       | 1.5     | 1.0      | 2.0            | FV-3D          | 14              | 5      | 2.5     | 1.5     | 3.2           |
| MJV-2 Valve                       | 30              | 10      | 5       | 3.0      | 6.2            | FV-3DP         | 14              | 5      | 2.5     | 1.5     | 3.2           |
| MJV-3 Valve                       | 30              | 10      | 5       | 3.0      | 6.2            | FV-4D          | 14              | 5      | 2.5     | 1.5     | 3.2           |
| MAVO-2 Valve                      | 27              | 9       | 4.5     | 2.5      | 5.2            | FV-4DP         | 14              | 5      | 2.5     | 1.5     | 3.2           |
| MAVO-3 Valve                      | 27              | 9       | 4.5     | 2.5      | 5.2            | FV-5D          | 14              | 5      | 2.5     | 1.5     | 3.2           |
| MJVO-2 Valve                      | 30              | 10      | 5       | 3.0      | 6.2            | FV-5DP         | 14              | 5      | 2.5     | 1.5     | 3.2           |
| MJVO-3 Valve                      | 30              | 10      | 5       | 3.0      | 6.2            |                |                 |        |         |         |               |

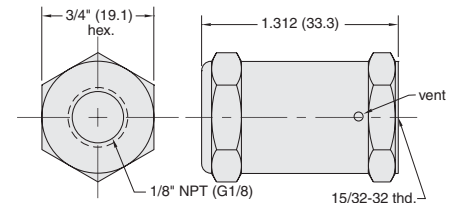
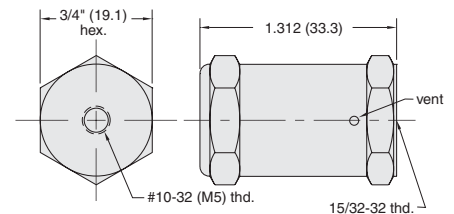
\*with 100 psig to valve inlet

## Single Acting Air Pilot Actuators

**Input Pressure:** 250 psig/17 bar max.

**Construction:** Body - brass; Springs - stainless steel; Seals - Buna N rubber; Piston - Delrin®

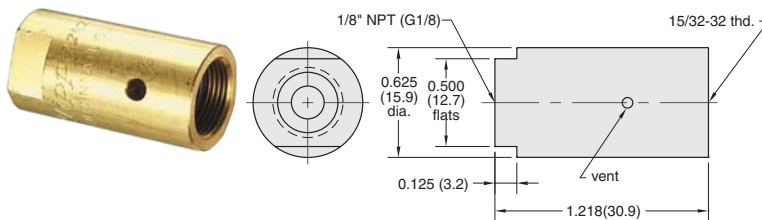
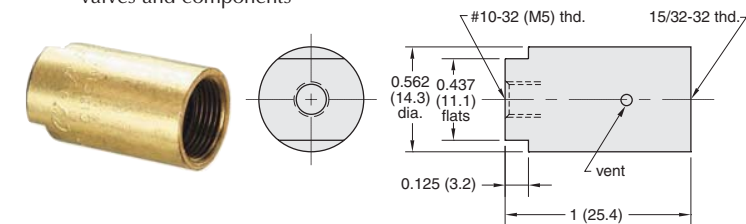
**Mounting:** #15/32-32 female thread to mount to Clippard miniature valves and components



**Bore Size:** 0.625 (15.9)

**Force Factor:** 0.3

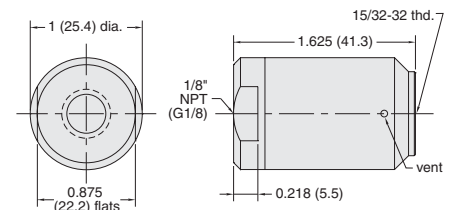
| Part No. | Description                                      |
|----------|--|
| MPA-5    | Single Acting, Spring Return Actuator, #10-32    |
| MPA-5-M5 | Single Acting, Spring Return Actuator, M5 Metric |
| MPA-5P   | Single Acting, Spring Return Actuator, 1/8" NPT  |
| MPA-5-MG | Single Acting, Spring Return Actuator, G1/8      |



**Bore Size:** 0.375 (9.5)

**Force Factor:** 0.1

| Part No. | Description                                     |
|----------|---|
| MPA-3    | Single Acting, Spring Return Actuator, #10-32   |
| MPA-3-M5 | Single Acting, Spring Return Actuator, M5       |
| MPA-3P   | Single Acting, Spring Return Actuator, 1/8" NPT |
| MPA-3-MG | Single Acting, Spring Return Actuator, G1/8     |



**Bore Size:** 0.825" (21.0) dia.

**Force Factor:** 0.6

| Part No. | Description                                     |
|----------|---|
| MPA-7    | Single Acting, Spring Return Actuator, 1/8" NPT |
| MPA-7-MG | Single Acting, Spring Return Actuator, G1/8     |

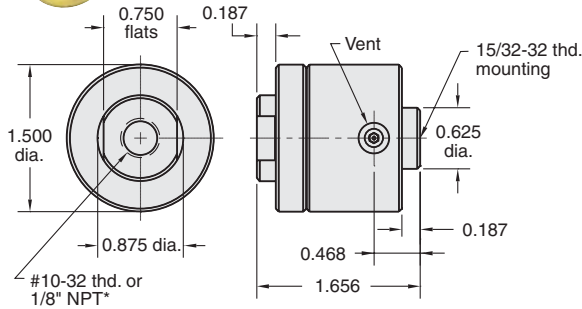


# VALVE ACTUATORS

## Pilot Actuators



Single Acting Spring Return Pilot Actuator



**Bore Size:** 1.250" dia.

**Input Pressure:** 150 psig max.

**Mounting:** #15/32-32 female thread to mount to Clippard Minimatic® valves and components; no spacers or washers are required when assembled to any Clippard valve; may be used with 15018-2 mounting bracket

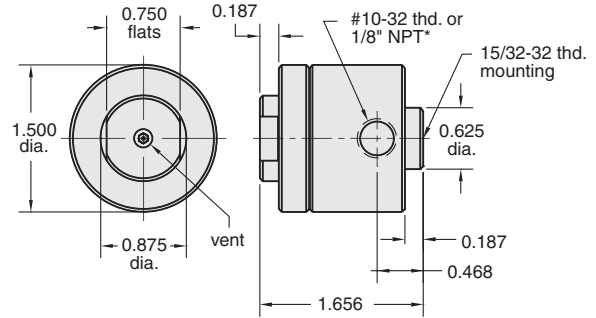
**Force Factor:** 1.2

| Part No. | Description                                     |
|----------|---|
| MPA-10   | Single Acting, Spring Return Actuator, #10-32   |
| MPA-10P  | Single Acting, Spring Return Actuator, 1/8" NPT |

## Vacuum Actuators



Single Acting Spring Return Vacuum Actuator



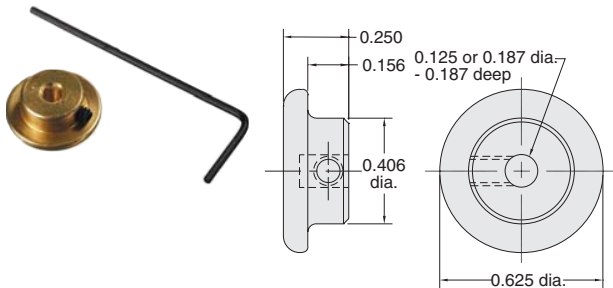
**Input Pressure:** 30 in. Hg .um

**Mounting:** #15/32-32 female thread to mount to Clippard Minimatic® valves and components; no spacers or washers are required when assembled to any Clippard valve; may be used with 15018-2 mounting bracket

| Part No. | Description                                     |
|----------|---|
| MVA-10   | Single Acting, Spring Vacuum Actuator, #10-32   |
| MVA-10P  | Single Acting, Spring Vacuum Actuator, 1/8" NPT |

## Push Button Actuators, 5/8"

Round Solid Brass 5/8" dia. Push Button



**Use:** Mounts directly on valve stem for manual operation of valve; prevents over-travel of valve stem by providing a positive stop

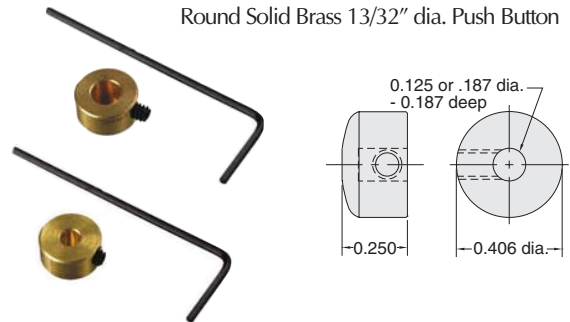
**Mounting:** 1/8" or 3/16" dia. mounting hole fits valve stems; locks in place by set screw (Allen wrench furnished)

**Note:** Individually packaged or bulk quantities available

| Part No. | Description                        |
|----------|------------------------------------|
| 11916-1  | 5/8" Brass Push Button, 1/8" Stem  |
| 11916-2  | 5/8" Brass Push Button, 3/16" Stem |

## Push Button Actuators, 13/32"

Round Solid Brass 13/32" dia. Push Button



**Use:** Mounts directly on valve stem for manual operation of valve; small size permits attachment to valve before valve is mounted through 15/32" dia. hole; prevents over-travel of valve stem by providing a positive stop

**Mounting:** 1/8" or 3/16" dia. mounting hole fits valve stems; locks in place by set screw (Allen wrench furnished)

**Note:** Individually packaged or bulk quantities available

| Part No. | Description                          |
|----------|--------------------------------------|
| 11916-3  | 13/32" Brass Push Button, 1/8" Stem  |
| 11916-4  | 13/32" Brass Push Button, 3/16" Stem |