

# #10-32 SHUTTLE VALVES



## Shuttle Valves

There are three models of shuttle valves offered by Clippard. These valves feature a shuttle that allows flow from one inlet to the outlet while blocking the other inlet. They may be mounted directly to valves and cylinders or in-line using the hose barbs on the MSV models.

Poppet type shuttle (double check) valve.  
Brass body, and poppet, Buna-N seal



**Medium:** Air, Water or Oil

**Input Pressure:** 250 psig/17.5 bar max.

**Air Flow:** 5.0 scfm @ 50 psig; 9.5 scfm @ 100 psig; 230 l/min @ 6 bar

**Mounting:** Direct or in-line

**Operation:** Flow from "A" to "C" or "B" to "C"

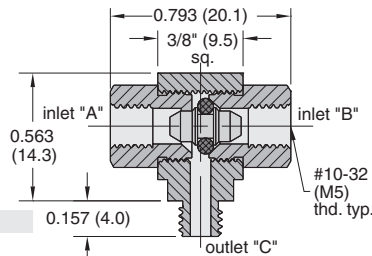
**Pressure to Shift:** 1/2 psig approx.

**Exhaust:** Through port where pressure was last applied

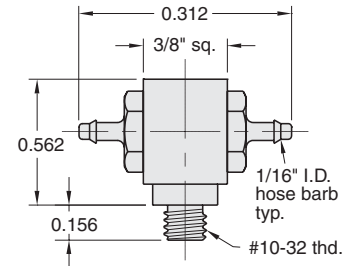
**Note:** Shuttle valves should not be used as a pressure selector



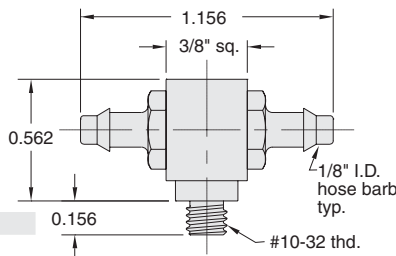
**Part No.**  
MSV-1  
MSV-1-M5



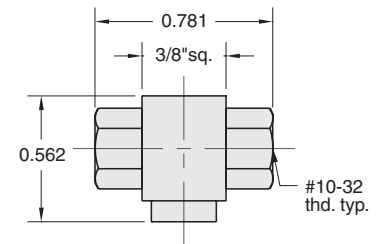
**Part No.**  
MSV-1M22



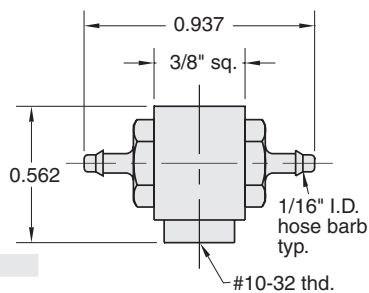
**Part No.**  
MSV-1M44



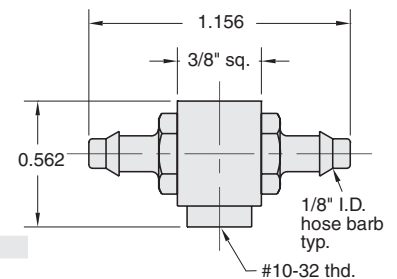
**Part No.**  
MSV-1FFF



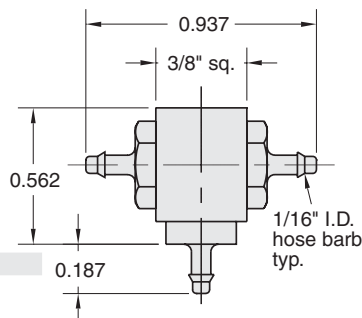
**Part No.**  
MSV-1F22



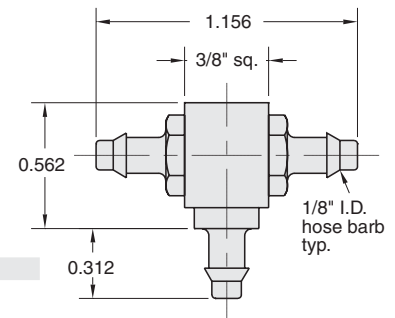
**Part No.**  
MSV-1F44



**Part No.**  
MSV-1222



**Part No.**  
MSV-1444



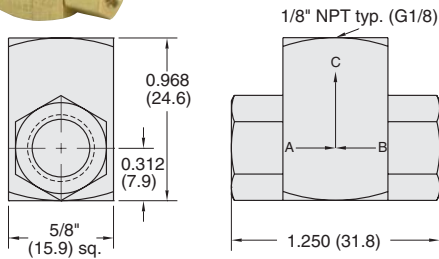


# SHUTTLE VALVES

## Poppet Type Shuttle Valves



Brass body, Delrin Poppet, Buna-N seal



**Medium:** Air, Water or Oil

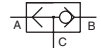
**Input Pressure:** 300 psig/21 bar - air; 1000 psig/70 bar - hydraulic

**Air Flow:** 14 scfm @ 50 psig; 26 scfm @ 100 psig; 630 l/min @ 6 bar

**Mounting:** Direct or in-line

**Operation:** Flow from "A" to "C" or "B" to "C"

**Pressure to Shift:** 1/2 psig approx.



**Note:** Shuttle valves should not be used as a pressure selector

**Part No. Description**

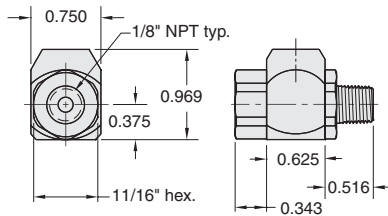
MJSV-1 . . . . Poppet Shuttle Valve, 1/8" NPT

MJSV-1-MG .Poppet Shuttle Valve, G1/8

## J-Series Shuttle Valves



**Part No.**  
JSV-2PFF



Poppet type shuttle (double check) valve. Brass body, stainless steel shuttle, Buna-N seal

**Medium:** Air, Water or Oil

**Input Pressure:** 300 psig max.

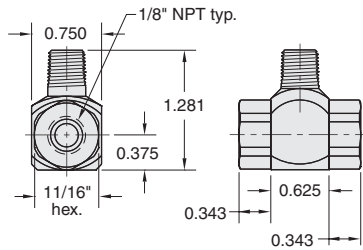
**Air Flow:** 30 scfm @ 50 psig  
50 scfm @ 100 psig

**Mounting:** Direct or in-line

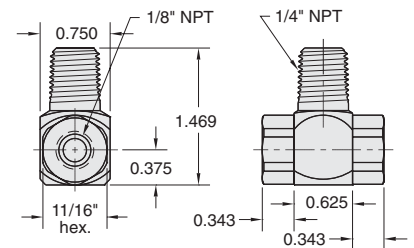
**Pressure to Shift:** 1 psig approx.



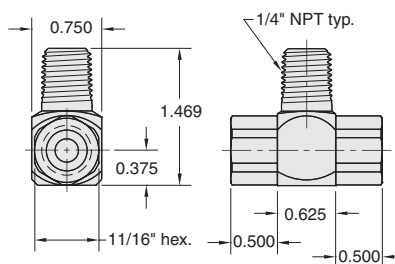
**Part No.**  
JSV-2PFF



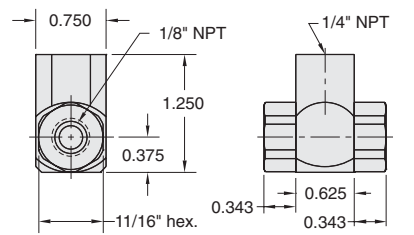
**Part No.**  
JSV-2WFF



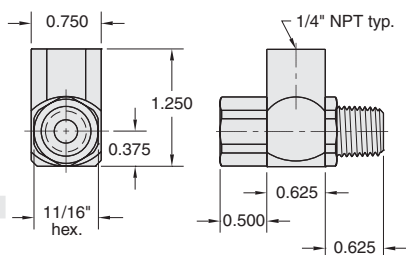
**Part No.**  
JSV-2WYY



**Part No.**  
JSV-2YFF



**Part No.**  
JSV-2YWY



**Part No.**  
JSV-2YYY

