



SPECIALTY COMPONENTS

Piloted Actuated Water Drawback Valves

When this Normally-Closed valve closes a spring biased internal piston draws back a small volume on outlet side (approx. 6-7" in 1/8" I.D. tube) thus preventing overflow or dribbles. Ideal for use in quenching or water spray applications.



Medium: Water or Other Light Liquids

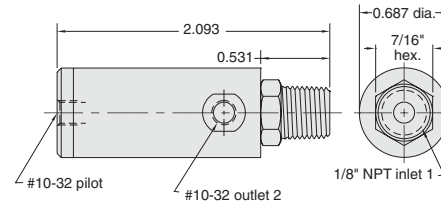
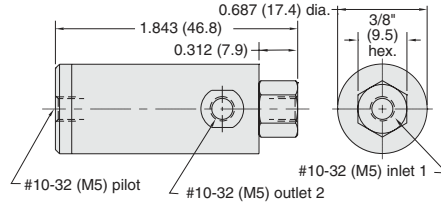
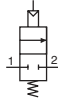
Input Pressure: 100 psig/10 bar max.

Pilot Pressure: 25 psig min.

Flow: 74 cu. in. H₂O per min. @ 80 psig

Drawback: 0.07 cu. in. (1.2 ml)

Mounting: Mounts in-line



Part No.	Description
WDV-2	Poppet Valve with Air Pilot, #10-32
WDV-2-M5	Poppet Valve with Air Pilot, M5
WDV-2P	Poppet Valve with Air Pilot, 1/8" NPT